



For Mac



# Graphic Tablet

## User Manual





# CONTENT

<b>I. General Information</b>	<b>3</b>
1. Overview	3
2. Graphic Tablet Functions	3
3. System Requirements	3
4. Installing the Driver Software	3
5. Hardware Installation	5
6. Verifying Hardware and Driver Functions	5
7. Usage Tips	5
<b>II. Driver Interface Introduction</b>	<b>6</b>
1. Control Interface	6
2. Pen Buttons Settings	6
2.1 Pen Button Functions	6
3. Pen Pressure Sensitivity Test	7
3.1 Workspace Settings	7
3.2 No Shortcut keys	8
4. Digital Pen Pressure Sensitivity Adjustment	9
<b>III. Pen Storage and Maintenance</b>	<b>10</b>
1. AAA Battery Pen	10
2. Rechargeable Li-ion Battery Pen	11
<b>IV. Question &amp; Answer</b>	<b>12</b>





# I. General Information

## 1. Overview

Welcome to the world of Huion tablet and Huion digital pen! You are able to discover how easy is to control your personal computer by using a wireless digital pen instead of a mouse. The function of the digital pen is able to draw a very thin, thick, light or dark line, which is called pressure sensitivity. You can write, sign, correct documents, edit photos, draw, sketch or paint as easily as you would do on a normal paper and simulate the functions like pencil, marker pen, brush, or water color pen by using the commercial software packages such as Adobe Photoshop, Corel Painter and Paint Shop and many others.

## 2. Graphic Tablet Functions

After installing the driver, your graphic tablet has the following functions:

- (1) Direct pointing — you can move the cursor to any area of the screen by hovering the digital pen tip over the tablet's surface.
- (2) Three-buttons mouse commands — your graphic tablet provides all functions of a three-buttons' mouse by using its pen tip and two buttons.
- (3) Pressure sensitivity — this feature allows you to simulate various brushes and pencils so you can press down the pen tip harder, lighter, then the wider and thinner line you will get.

## 3. System Requirements

Mac OS X 10.8.0 or later

## 4. Installing the Driver Software

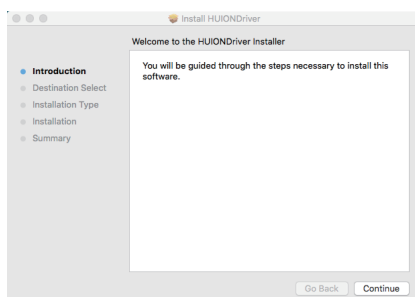
**We kindly recommend downloading latest drivers from our official website since they are regularly updated.**

Installation procedures:

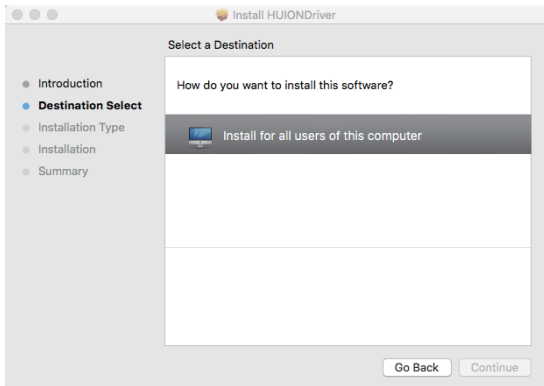
- a. Insert the disc in the CD-ROM drive. (If your Mac doesn't have a CD-ROM, please download the driver from our official website [www.huion-tablet.com](http://www.huion-tablet.com).)
- b. A disc icon will appear on your Mac. Double-click the icon to see the file structure.
- c. Select the corresponding models to install the driver.



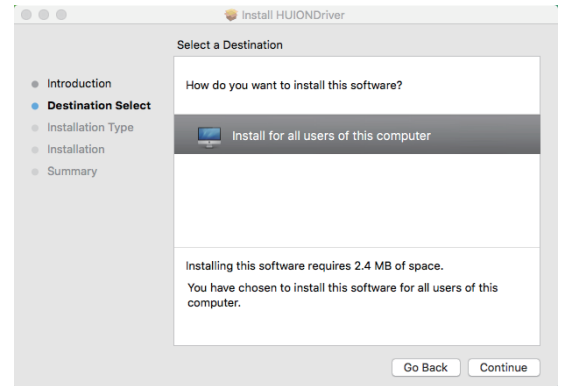
- d. Click the Continue button on the welcome screen.



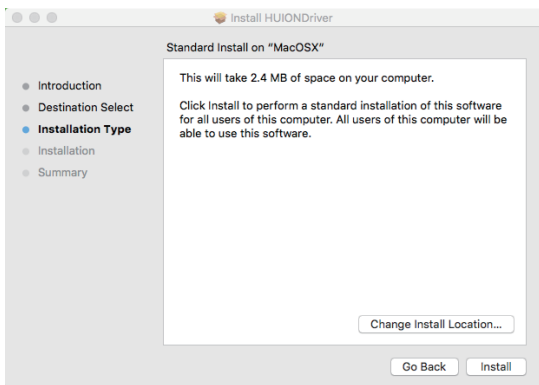
e. Choose: install for all users of this computer



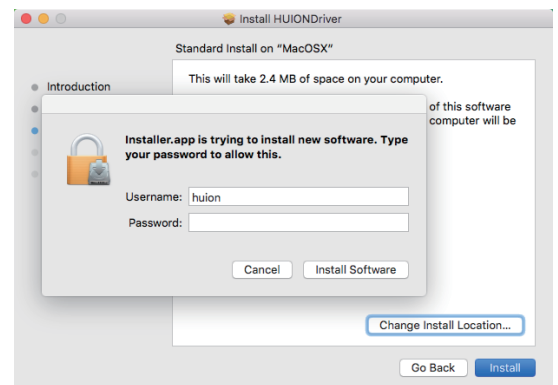
f. Choose: Continue



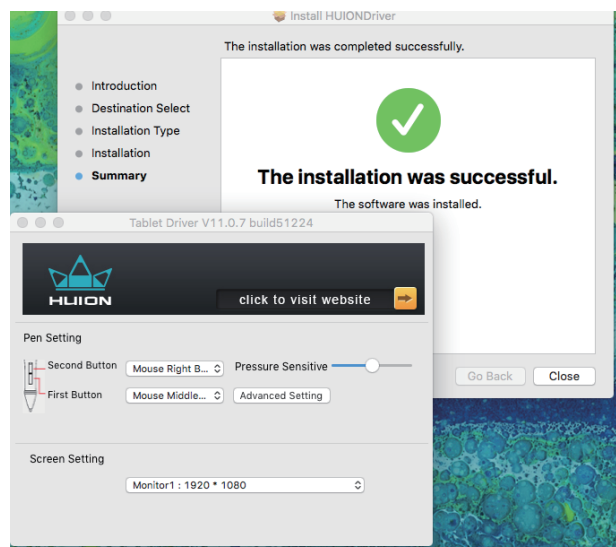
g. Choose: Install



h. Enter your user name and password



i. Once the installation is completed, click the Close button to exit the installer.



## 5. Hardware Installation

- Plug one end of the included USB cable into the USB port on the tablet and the other into an available USB port on your Mac.
- Please turn on the pen and graphic tablet if there is a switch on them.
- Battery pen and rechargeable pen using the instructions found in section III below.

## 6. Verifying Hardware and Driver Functions

### 6.1 USB wired graphic tablet

\* The following picture is for reference only to H610, the picture might vary with different models.



### 6.2 Follow the steps to verify if the tablet is installed properly

The LED light on the tablet is the main indicator for hardware functionality. Depending on your graphic tablet model, it may be located at a different place of the tablet. That is shown in the diagram above. This LED indicator normally stays off, and will only turn on or off in response to various conditions. Watch the state of the LED on the tablet as you go through these test steps:

- (1) For battery pen, press down the switch button at the top of the pen, then the pen will be turned on and activated. If you want to quit your work, press it again to turn it off. For rechargeable pen, tap on any surface with the tip of the pen to “wake it up”.
- (2) As soon as the graphic tablet itself is activated, the LED will be lit briefly, and will turn off again.
- (3) When the tablet detects the presence of the digital pen, the LED will blink slowly. This happens either when pen tip is hovering or placing within the working area of the tablet.
- (4) When you press a button on the pen barrel, the LED will be lit up.
- (5) Hovering and moving the pen in the working area will cause the cursor on the screen to move accordingly.

## 7. Usage Tips

The following guidelines will help obtain the best results in using this Graphic Tablet:

**Double Tapping:** A quick double tap of the pen tip is the equivalent to a double-click on a mouse.

**Using With A Mouse:** In addition to the tablet and pen, you can also have a mouse connected and installed.

However, only one device will function at a time. Do not connect more than two input devices at the same time as it could cause the cursor to jitter or freeze.

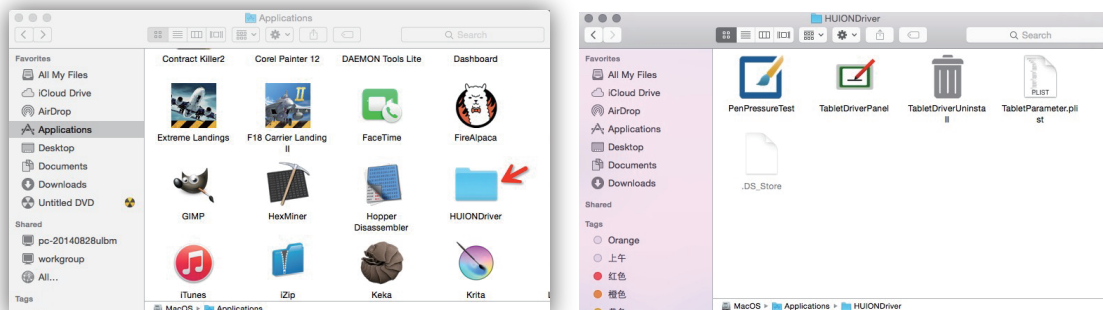
**Power:** It is recommended to power off the pen and tablet when not in use.

**Storing:** Do not store the pen in such a way that pressure could be applied to the tip. When not in use, store the pen in a pen holder or place it horizontally on a flat surface. When storing for a long period of time, remove the pen tip using the instructions found in section III below.

## II. Driver Interface Introduction

The configuration dialog allows you to modify pressure sensitivity, monitor selection, customize the buttons, etc.

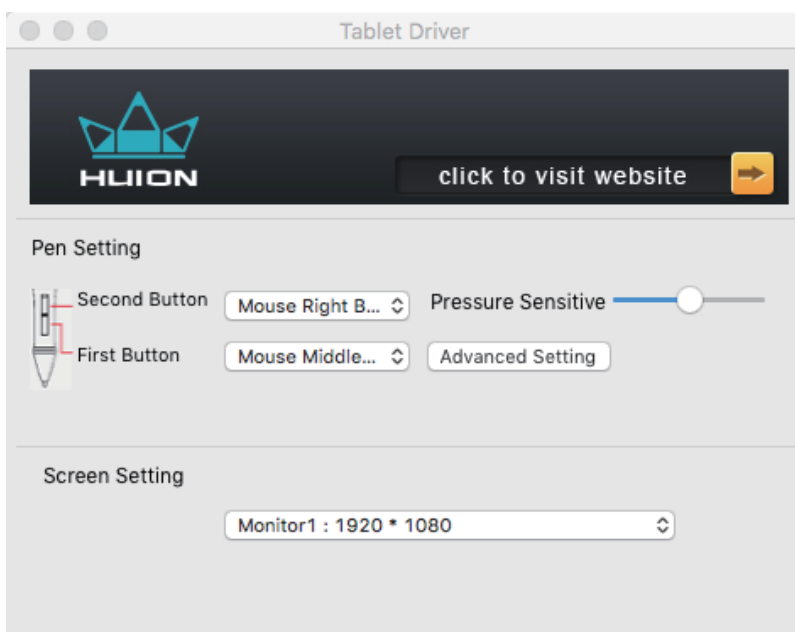
a. Click the **Applications** enter into the HUIONDrive.



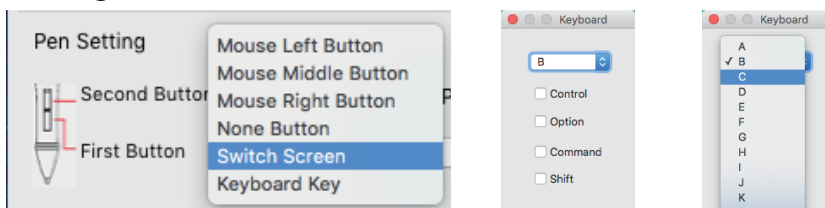
b. Double-click the HUIONDrive to access the TabletDrivePanel to change settings of the graphic tablet.

c. Double-click the TabletDriverUninstall to open it, then you can restart the Daemon Process, or uninstall the Driver.

### 1. Control Interface



### 2. Pen Buttons Settings



#### 2.1 Pen Button Functions

Above are the digital pen functions settings. Selecting its "Mouse Left Button, Mouse Middle Button, Mouse Right Button, None Button, Switch Screen, Keyboard Key" on the corresponding right drop-down menu to set the digital pen's "First Button and Second Button" functions.

### Pen's default settings:

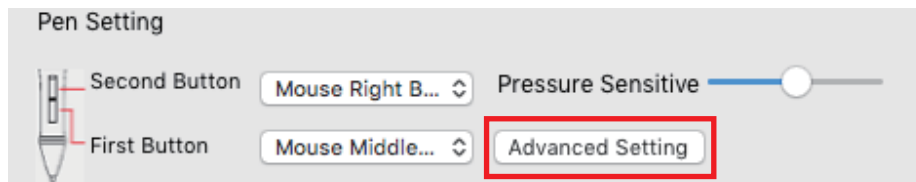
- (1) The pen nib is equivalent to the mouse left button function.
- (2) The First Button is equivalent to the mouse middle function
- (3) The Second Button is equivalent to the mouse right function.

Note:

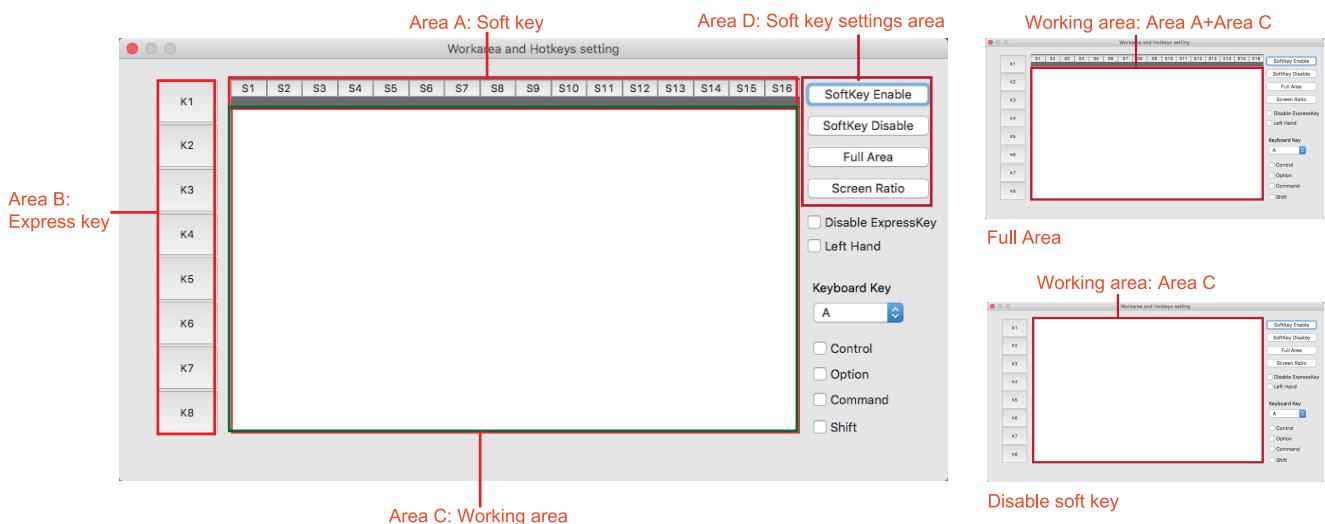
- (1) "Left Button, Middle Button, Right Button" functions represent a normal mouse left, middle, right button functions.
- (2) When choosing "Middle Button", the corresponding pen button will have the same "Press" function as a normal mouse, but doesn't have the "Scroll" function.
- (3) When choosing the "Keyboard Keys", there will appear an "Express Key Settings (as Picture II). You can set the pen button functions as the same as any "Express Key" or "Keyboard Keys" functions (as Picture III). Digital pressure sensitive pen default setting functions:
- (1) The pen nib is equivalent to the mouse left button function.
- (2) When the first key is E, you can switch it to eraser in the graphic software (such as photoshop etc.)
- (3) The second key is equivalent to the mouse right function.

## 3. Working Area and Advanced Settings

Click the "Advanced Setting" button in tablet settings (see the selected area below), you can access into the working area and keys function settings.



### 3.1 Workspace Settings



Area A: Soft key area

Area B: Express key area

Area C: Working area

Area D: Soft key has three settings: "Soft key Disable, Soft key Enable, Full Area".

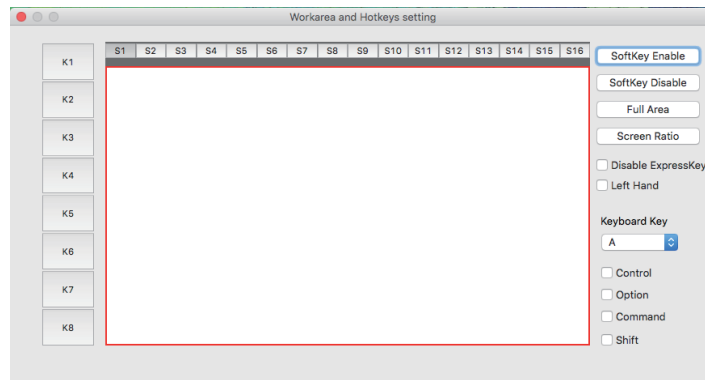
Softkey Disable: select this key, the key function will be disabled in the working area. The graphic tablet's working area is limited in the C area.

SoftKey Enable: Select this key, the function shortcut keys will be enabled in the work area of the graphic tablet.

Full Area: Full area selected, graphic tablets' work area will be expanded to Zone A plus Zone C, SoftKey function is disabled.

Note: Some models have no Express Key or Soft Key functions.

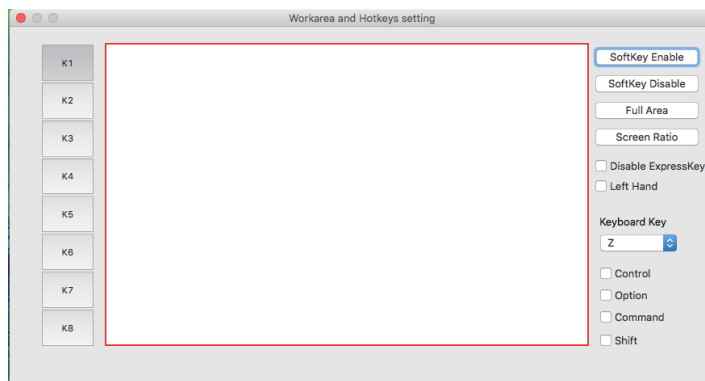
### 3.1.1 Soft Key Settings (only for some model of graphic tablet with soft keys)



Click the Soft Key area can enter into Soft keys' function setting screen(pictured above)

Note: Some models have no Express Key or Soft Key functions.

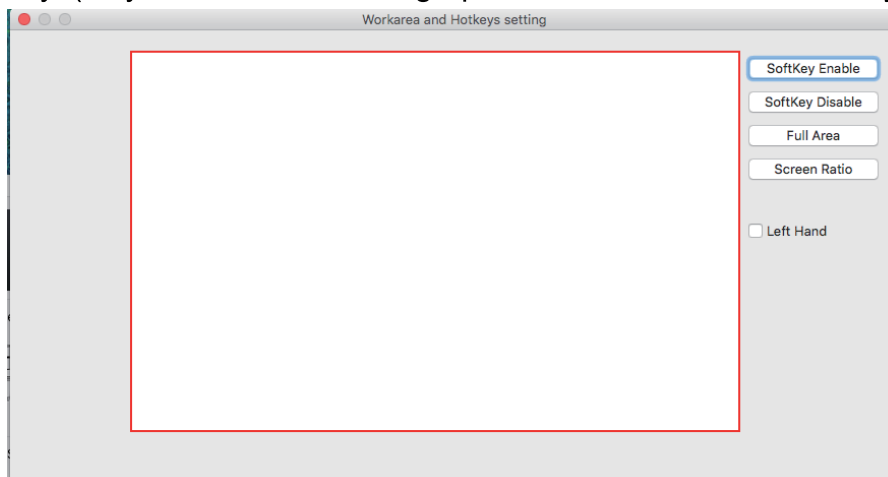
### 3.1.2 Express Key Settings(only for some model of graphic tablet with express keys)



Click any express key to enter into the express keys' function setting screen(pictured above).

Note: Some models have no Express Key or Soft Key functions.

### 3.2 No Shortcut keys(only for some model of graphic tablet without shortcut keys)



## 4. Digital Pen Pressure Sensitivity Adjustment



Pressure Sensitivity: move the slider from left to right, it can be used to adjust the sensitivity of the tip and the severity of the stroke when drawing, which affects the change of the handwriting(Area 1).

When your computer has two screens in extended mode, you can choose the corresponding work area of the graphic tablet in the setup screen area(Area 2).

## III. Pen Storage and Maintenance

### 1. AAA Battery Pen

#### 1.1 Storing the AAA Battery Pen

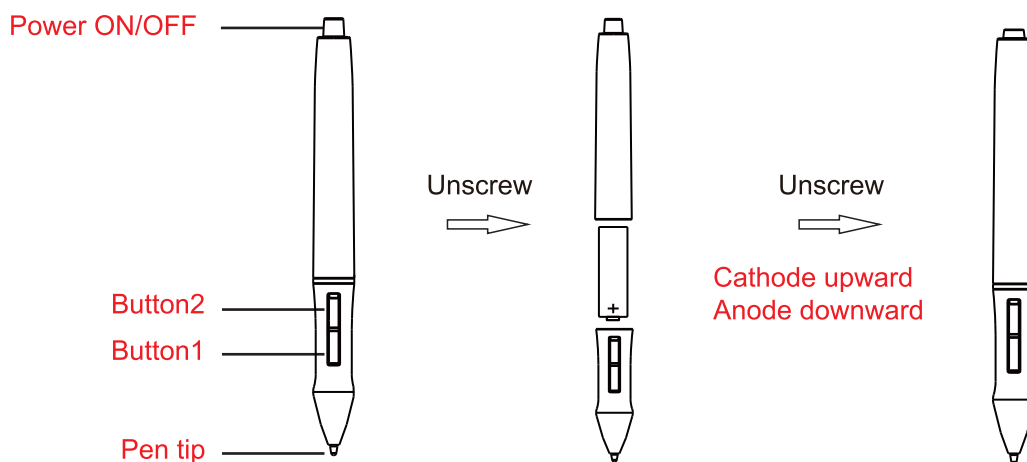
The AAA battery pen should be stored in such a way that nothing touches the tip. Prolonged pressure on the tip, even a slight pressure, can damage the ability of the pen to use the full range of pressure sensitivity.

If the pen will simply be unused overnight or for any other short period of time, placing it in the included pen holder or horizontally on the desk is sufficient. For long-term storage or shipping, the tip and battery should be removed.

#### 1.2 Replacing the Battery in the AAA Battery Pen

To install, remove, or replace the battery in the AAA battery pen, perform the following steps:

- Unscrew the top half of the pen from the bottom half. The junction is at the upper edge of the rubberized grip portion of the pen.
- Allow the old battery to fall out of the top half of the pen. Dispose of the battery in accordance with local regulations.
- Insert a new AAA alkaline battery (not included) in the top half of the pen. The positive lead should be visible in the open pen half so that it makes contact with the bottom half when the pen is reassembled.
- Carefully line up the threads of the bottom and top halves of the pen and screw it together. Take care not to cross thread the pen because the plastic threads can be easily damaged. Screw the pen together firmly but not too tight.

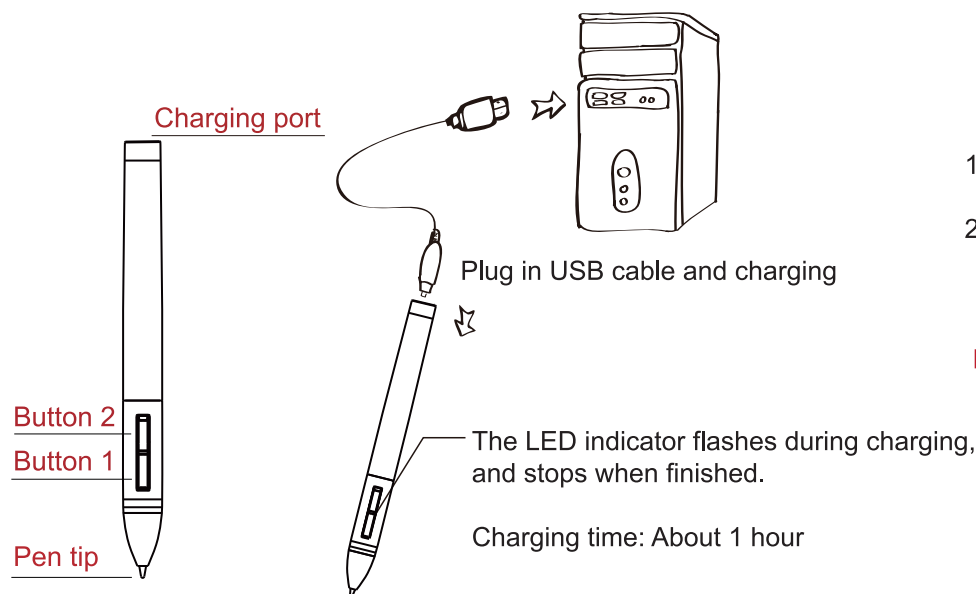


#### 1.3 Replacing the Pen Tip

If the pen tip needs replacing or removal due to long-term storage, perform the following steps as applicable:

- Open the pen holder and remove the metal pen clip.
- Position the pen clip over the exposed portion of the pen tip. Squeeze the clip with your fingers to provide a firm grip on the tip.
- Pull gently until the tip is completely removed.
- Take a replacement tip out of the pen holder and gently insert it into the pen until it is fully seated into place.
- Use the Pressure Test dialog in the driver utility to test the operation of the newly replaced tip.

## 2. Rechargeable Li-ion Battery Pen

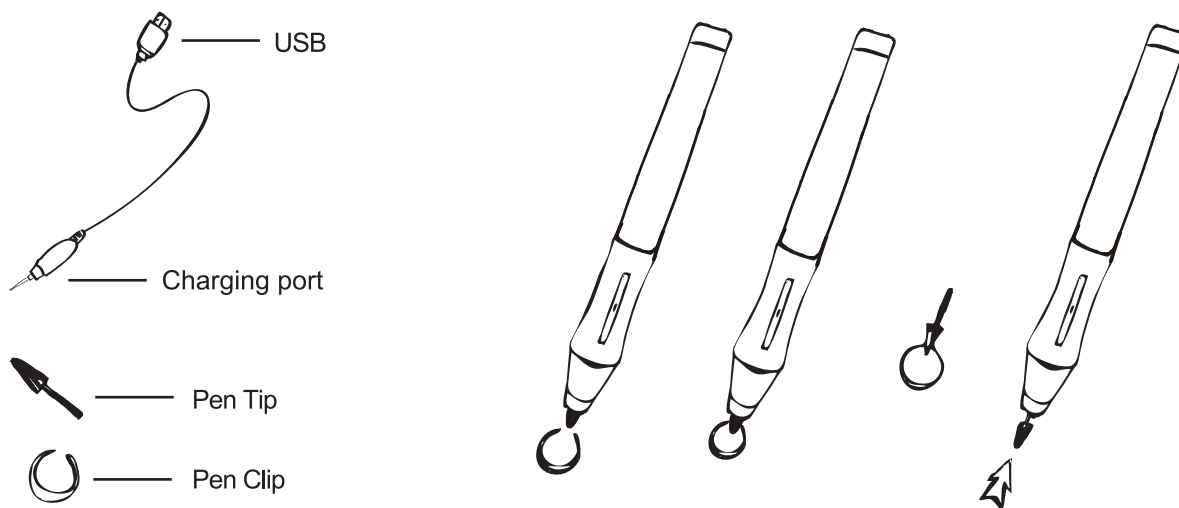


1. Tap on any surface with the tip of the pen to "wake it up".
2. It will "auto sleep" if not used for a period of time.

**Note:** If the line is unstable, it means you have to charge.

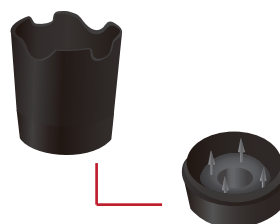
### Replacing the rechargeable pen tip

A: Pull out the pen tip from rechargeable pen by using the pen clip that is inside of the pen holder.



B: Push the pen tip into the rechargeable pen and make sure fit it up to the end properly.

Gently unscrew the pen holder in a counterclockwise direction. You will see one pen tip replacement tool & 4 spare pen tips inside.





## IV. Question & Answer

Question 1: How can I get an updated software?

Answer: You can download the latest driver from our official website [www.huion-tablet.com](http://www.huion-tablet.com) or [www.huiontablet.com](http://www.huiontablet.com), or you can send us an email: [service@huiontablet.com](mailto:service@huiontablet.com).

Question 2: The tablet does not work. What can I do?

Answer: Please follow one of the steps as mentioned below:

- a. Close and restart your software (such as PS, Painter) to check if it works.
- b. Restart your computer.
- c. Uninstall your driver, download the latest driver and install it.
- d. Change to another computer and then try your Graphic Tablet.

If the Graphic Tablet still does not work, please contact our service center for assistance.

Question 3: Why does the cursor moves and flashes constantly even when I haven't moved the pen?

Answer: It could be because some electronic devices emit electromagnetic interference.

Please maintain the distance of at least five inches between the Graphic Tablet and other electronic equipment.

Question 4: There is no pressure sensitivity in the drawing software but still the cursor moves while moving the pen, why?

Answer: You may have installed other drivers or opened the drawing software while installing the driver. Please uninstall all drivers and close the drawing software, then reinstall the Huion drive. Once installation is finished, open the drawing software to check if it works.

