

Kamvas Pro 24 (Gen 3)



Thanks for choosing HUIONKamvas Pro 24 (Gen 3) creative pen display.

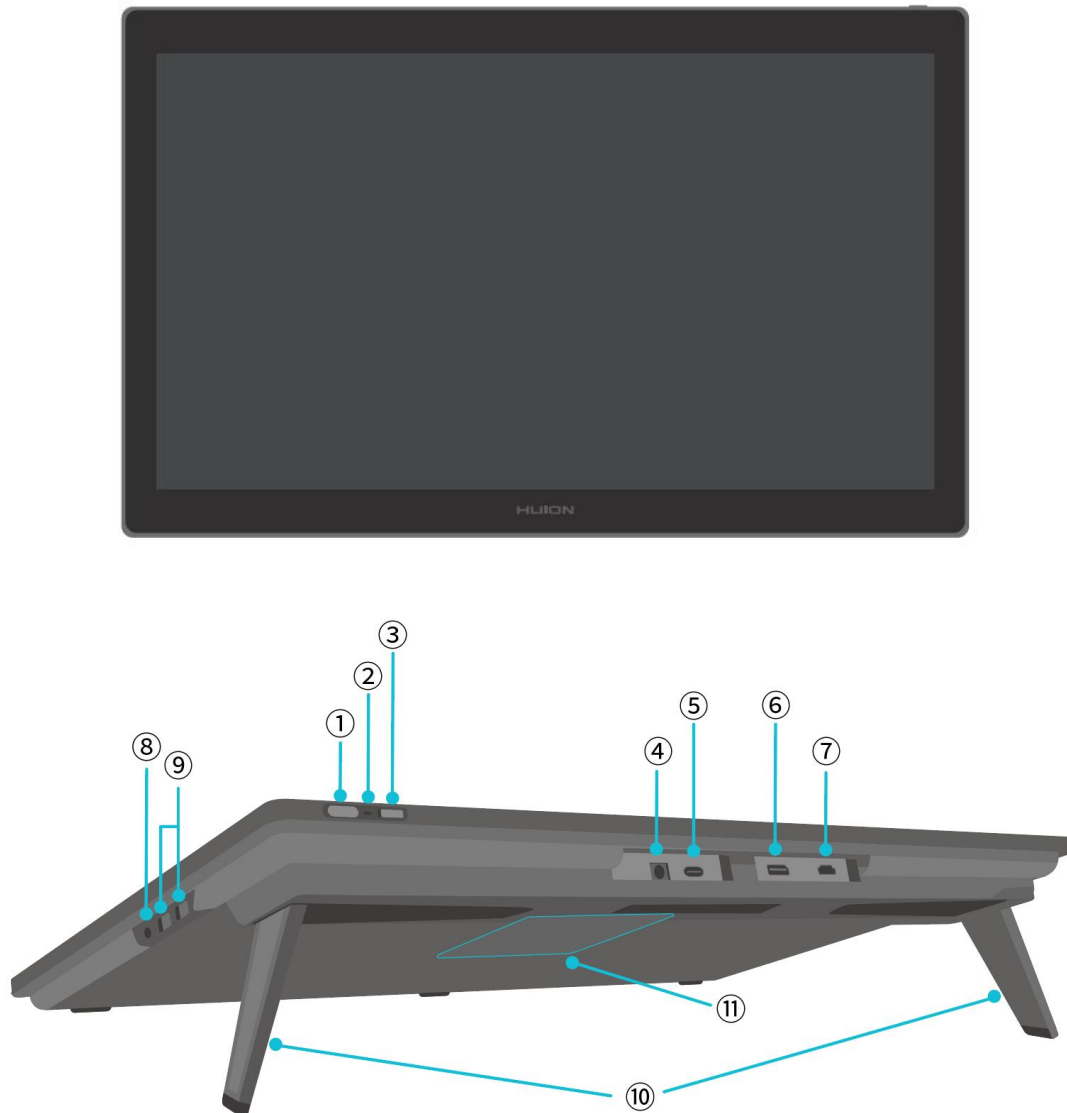
As a new generation of professional pen displays, Kamvas Pro 24 (Gen 3) enables you to enjoy drawing and creating with higher efficiency. With this pen display, you can freely write and draw, making lines varied in width, painting pictures in different shades of colors, and gaining a pen-on-paper experience.

To ensure that you fully understand and efficiently use this product, we strongly recommend that you read this user manual carefully.

Note: The pictures in the manual are for reference only and are intended to assist you in understanding the design and function of the product. A change in design or specification may occur without notice.

1. Product Introduction

1.1. Product Overview



① Power Button/Display Settings Button

- Short press: Turn on/off the pen display.
- Long press for 3 seconds when the pen display is turned on: Call up the on-screen adjustment menu ([pen-enabled OSD menu](#)).

② Indicator Light

- White light on: Working status
- Red light on: Sleep status
- Light off: Not connected to power/pen display is not turned on

③ Slide Switch

Slide the switch left or right to disable or enable the finger touch function.

④ Power Input

To connect 19V 3A power adapter for power supply.

⑤ Full-functioned Type-C Port

To connect a computer that supports the full-featured USB-C cable/transfer handwritten data.

⑥ DisplayPort

To transmit DisplayPort signals.

⑦ HDMI Port

To transmit HDMI signals.

⑧ 3.5mm Headphone Jack

To connect a 3.5mm connector.

⑨ USB-A Port × 2

To connect a USB flash drive, keyboard, mouse, etc.

⑩ Built-in Stand

Two built-in stands adjustable between 0° to 20° provide the right viewing height and stable support.


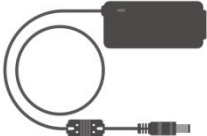
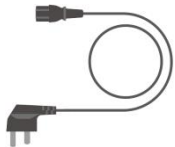


⑪ VESA Mounting Hole






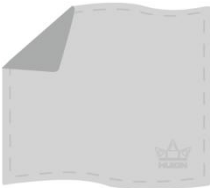


With the 100 mm × 100 mm VESA hole pattern, you can mount theKamvas Pro 24 (Gen 3) pen display on a variety of specification-compliant VESA brackets (available at [HUION Store](#)) or on other brackets or arms for flexible adjustment of the angle and position of the pen display.

Note: As theKamvas Pro 24 (Gen 3) pen display weighs approximately 6.4kg, you should make sure that the bracket or arm you purchase separately can support the weight, otherwise safety hazards may occur during installation.

1.2. Accessories

After unpacking, make sure you receive the following items:

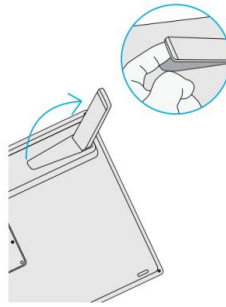
Kamvas Pro 24 (Gen 3) Pen Display	
AC Power Adapter	
AC Power Cord (1.5m)	
HDMI Cable (1.8m)	
Full-featured USB-C Cable (1.8m)	

USB-A to USB-C Cable (1.8m)	
PW600 Digital Pen	
PW600S Digital Pen	
PN06 Standard Pen Nib x 5 (inside the pen case)	
PN06F Felt Pen Nib x 5 (inside the pen case)	
Pen Case (Built-in nib clip, pen nibs)	
K40 Keydial Remote	
Cleaning Cloth	
Glove	
Quick Start Guide	
G1 GTCOLOR Calibrator	

1.3. Stand Installation and Usage

TheKamvas Pro 24 (Gen 3) pen display has two built-in stands on the back which

can be unfolded for use.

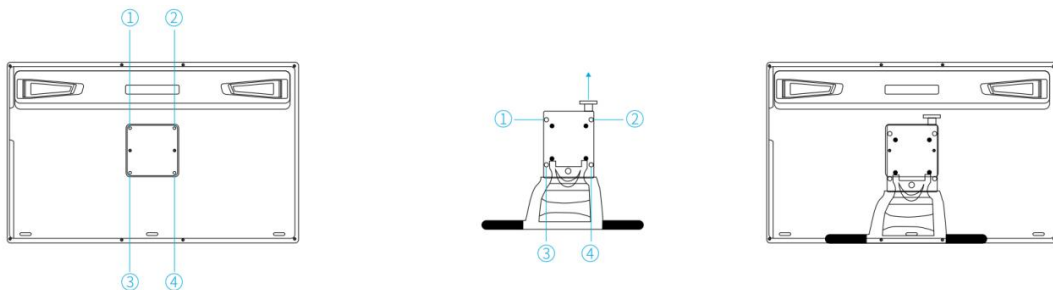


Note:

1. In addition to the built-in stands, with the VESA hole pattern on the back of the pen display, you can also mount the pen display on a variety of specification-compliant VESA brackets (available at [HUION Store](#)), or on other brackets or arms that allow you to adjust the angle and position more conveniently.

The following takes the installation of the Huion ST100 adjustable stand as an example, **but the stand is not included and needs to be purchased separately:**

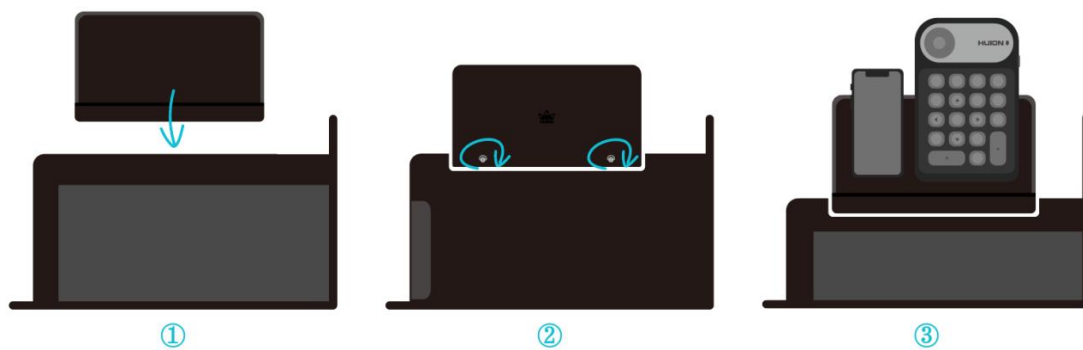
- ① Align the 4 mounting holes of the stand with the 4 VESA mounting holes on the back of the pen display and tighten the screws.
- ② After installation, pull the slider bar to adjust the stand angle (30°-85°).
- ③ Find a suitable angle and you can start to use the pen display.



2. The pen display can be used with a keyboard tray (available at [HUION Store](#)) or other brackets to make it easier for you to place your keyboard, mobile phone, or other devices.

The following takes the installation of the Huion KH01 keyboard tray as an example,
but the keyboard tray is not included and needs to be purchased separately:

- ① Clamp the keyboard tray to a proper position on the pen display;
- ② Tighten the screws on the back of the keyboard tray;
- ③ After installation, you can start to use it together with a keyboard, mobile phone, or other devices.

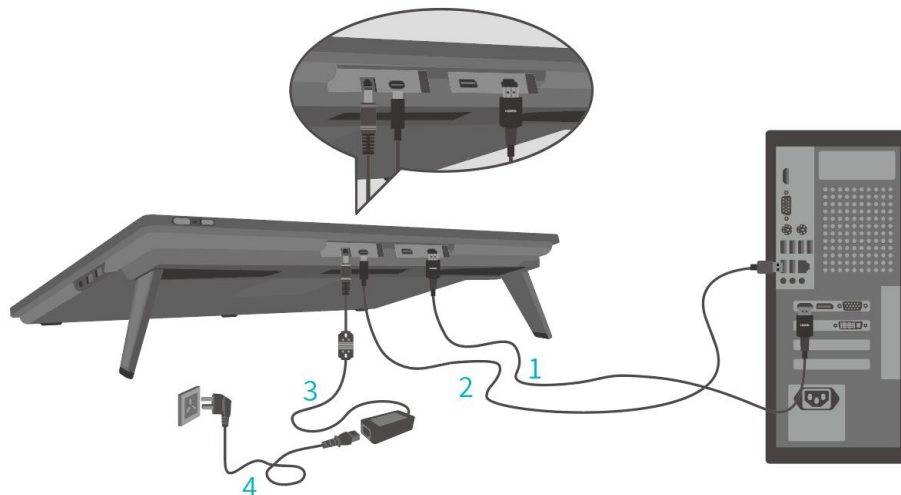


2. Connection

The pen display can be connected to computers and Android devices. Please refer to the following connection methods.

2.1. Connect via the HDMI Cable

1. Plug one end of the HDMI cable into the HDMI port on the computer and the other end into the HDMI port of the pen display;
2. Plug the USB-C connector of the USB-A to USB-C cable into the USB-C port of the pen display, and then plug the USB-A connector into the USB-A port on the computer;
3. Plug the connector of the power adapter into the power port of the pen display;
4. Connect the power adapter to the power cord, then plug the power cord into the outlet.



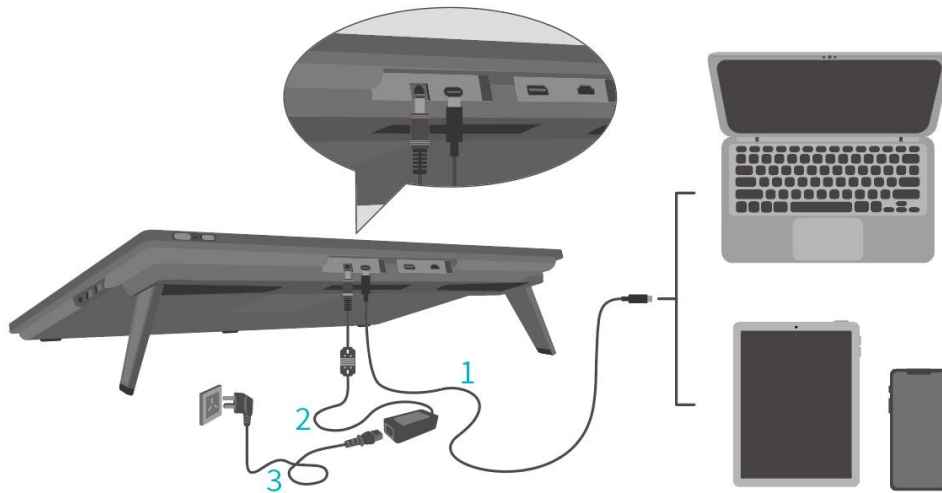
2.2. Connect via the Full-featured USB-C Cable

1. Plug one end of the full-featured USB-C cable into the USB-C port of the pen display and the other end into the USB-C port of your computer/tablet/Android

device or docking station to transfer signals and data;

2. Plug the connector of the power adapter into the power port of the pen display;

3. Connect the power adapter to the power cord, then plug the power cord into the outlet.



3. Driver Installation

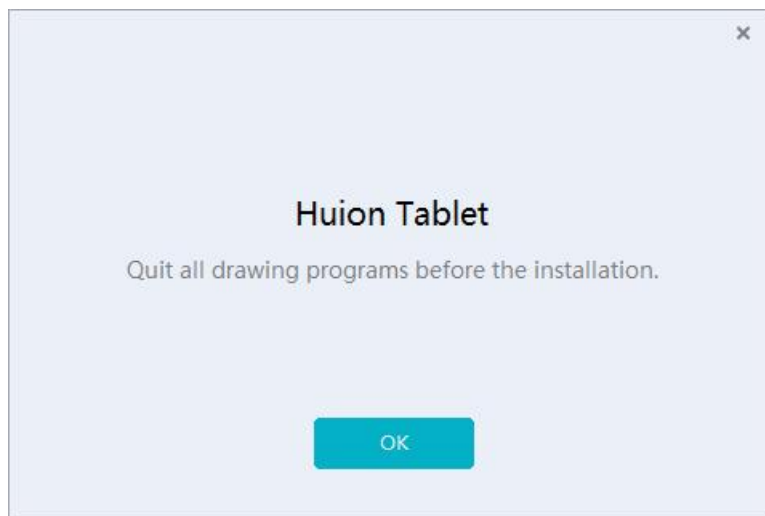
3.1. Windows

Note:

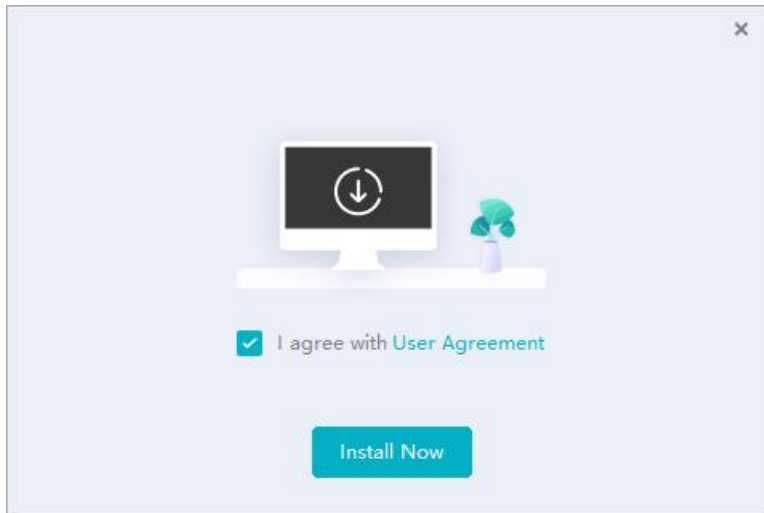
- ① Before installing the driver, please close all graphic software and antivirus programs.
- ② Please make sure your computer operating system is Windows 10 or later.
- ③ If the connection fails, please restart the driver or your computer.
- ④ If you uninstall the driver, there may be unknown problems with the keyboard in certain applications. In this case, please reinstall the driver and your keyboard will return to its default settings.

Driver Installation Instruction:

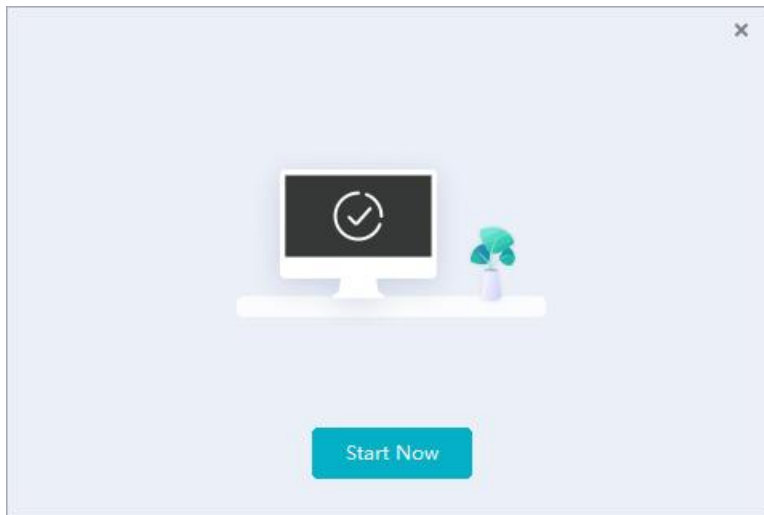
1. Connect the pen display to your computer.
2. Click [Driver-Kamvas Pro 24\(Gen 3\)](#) to get the latest driver for your device.
3. Double-click the driver and click "OK" to proceed.



4. Check the box to agree with the User Agreement and click "Install Now" .



5. After the installation has been completed, click on "Try it now" .



6. A picture of Kamvas Pro 24 (Gen 3) will appear on the driver interface to indicate a successful connection. Now you can use your pen display.



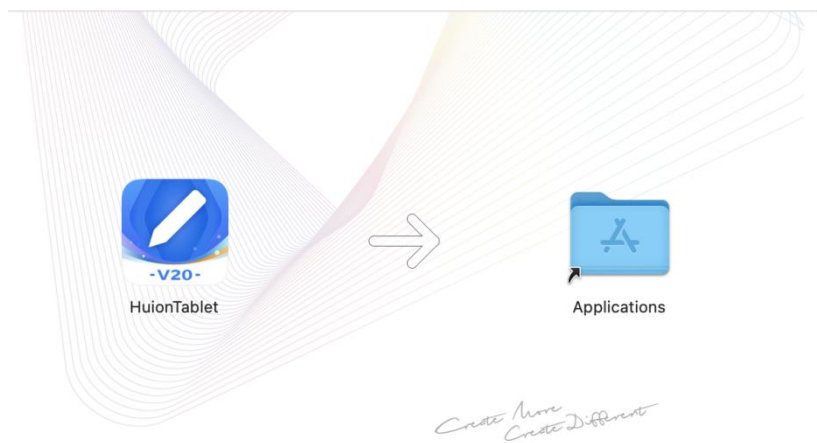
3.2. macOS

Note:

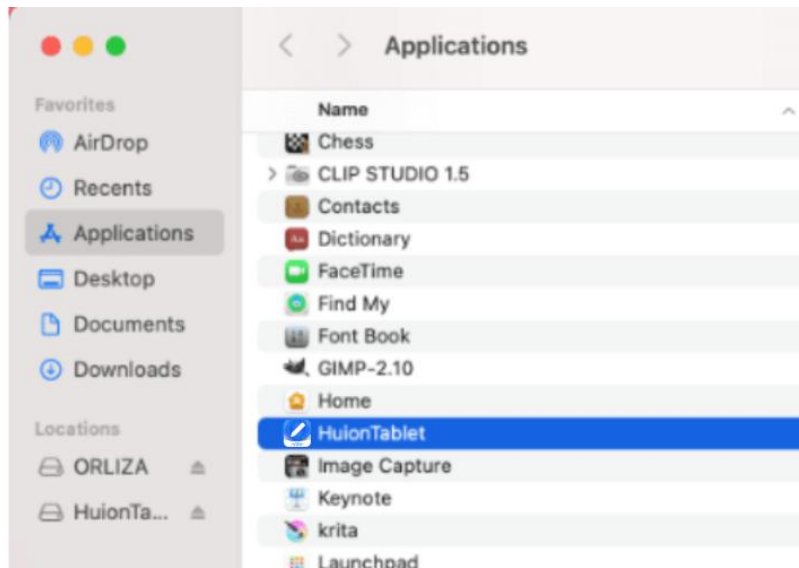
- ① Please make sure your computer operating system is macOS 10.12 or later.
- ② If the connection fails, please restart the driver or your computer. For more information, please refer to Troubleshooting. See section.
- ③ If you uninstall the driver, the pen display may experience no pressure sensitivity or other unknown issues in certain applications. In this case please reinstall the driver and your pen display will return to its default settings.

Driver Installation Instruction:

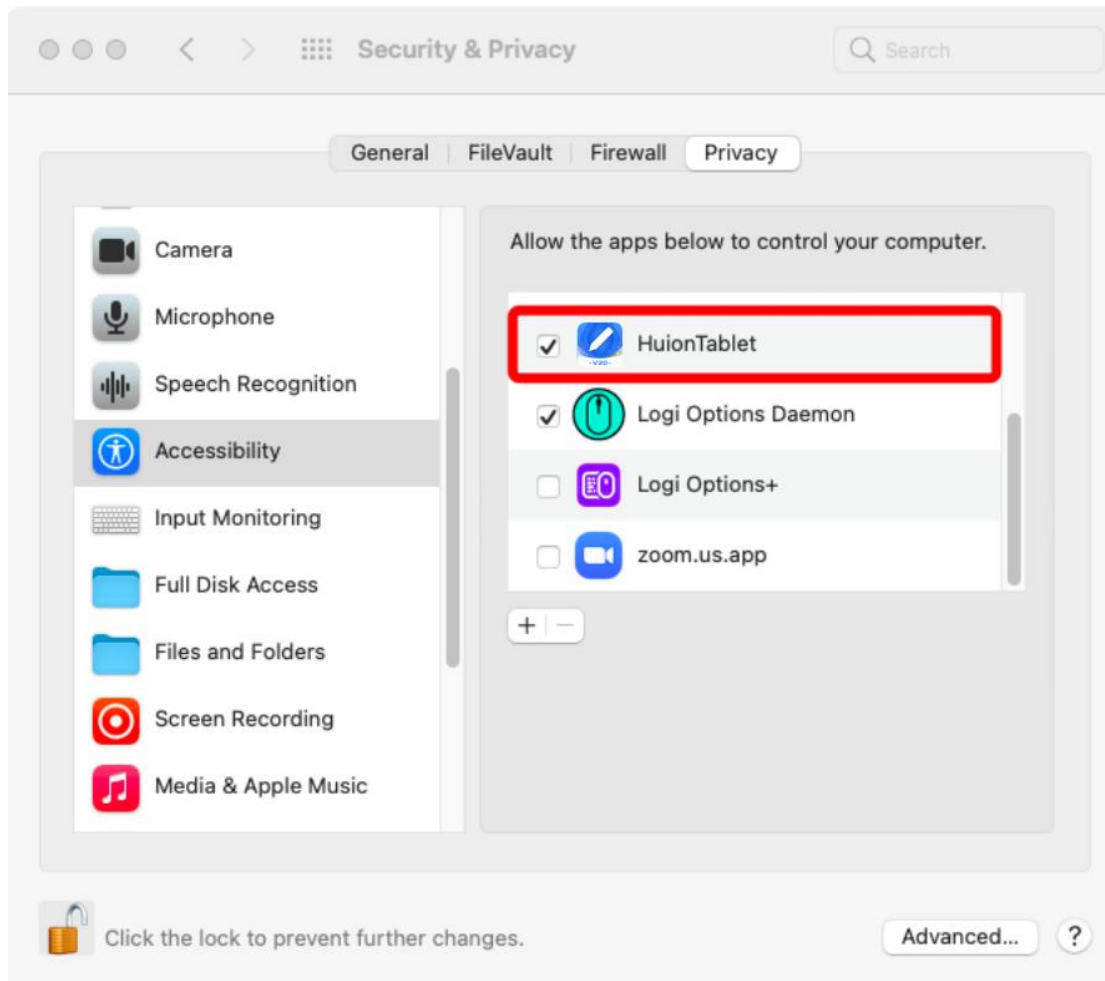
1. Connect the pen display to your computer.
2. Click [Driver-Kamvas Pro 24\(Gen 3\)](#) to get the latest driver for your device.
3. Unzip the driver file and drag the “HuionTablet” icon into the “Applications” folder.



4. Open the folder and then find and double-click the HuionTablet driver application.



5. Connect the pen display to your Mac, and click "Open System Preferences" when prompted. Go to Security & Privacy > Privacy > Accessibility settings and click the lock icon to unlock the settings. Tick the checkbox on the left of the HuionTablet driver application to enable accessibility. Then click the lock icon to lock the settings.



6. A picture of Kamvas Pro 24 (Gen 3) will appear on the driver interface to indicate a successful connection. Now you can use your pen display.



4. How to Use the Digital Pen

Both digital pens feature a non-slip silicone grip, alleviating fatigue from holding the pen for extended periods. The PW600 is equipped with 3 programmable side buttons and 1 eraser button, while the PW600S is equipped with 2 programmable side buttons and 1 eraser button, allowing for quick access to frequently used functions and significantly increased efficiency.

Hold the Pen:

Hold the digital pen as you hold a real pen. Adjust your grip so that you can toggle the pen press keys easily with your thumb or index finger. Be careful not to accidentally press the key while drawing with the pen.

Note: Please do not put the pen on the pen display when it is not in use, otherwise it may interfere with the function of the mouse and other devices, and it may also prevent your computer from entering sleep mode.

Cursor Movement:

Move the pen slightly above the working area of the pen display without touching the surface of the pen display, and the cursor on the screen will move to the new position accordingly.

Click:

Tap on the working area of the pen display with the pen to register a click. Press lightly to highlight or select an item on the screen, long press to drag the item and double-click to open it.

Move:

Pick up a file or icon, then slide the pen nib across the screen to move it.

Erase:

Move the eraser button over the area you want to erase, just as you would with a pencil eraser.

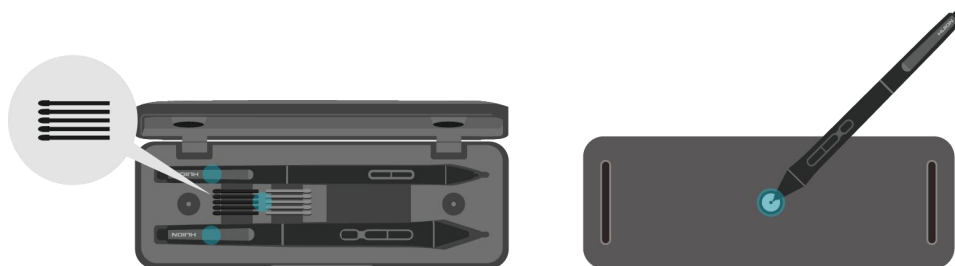
Use the Pen Press Keys:

The functions of the pen press keys can be programmed in the driver. The pen press keys will work as long as the vertical distance between the pen nib and the pen display is within the sensing height (10mm). If you don't want to use the pen press keys, you can set them to no function in the driver.

Replace the Pen Nib:

Tip: When the pen nib is badly worn, please replace it with a new pen nib timely.

1. Open the pen case and take out a replacement nib.
2. Tilt the pen, and pull the worn nib out of the pen through the built-in nib clip on the back of the pen case.
3. Insert the replacement nib straight into the barrel of the pen until the nib stops moving forward.



5. How to Use the Capacitive Touch

Adopting a capacitive touchscreen panel, Kamvas Pro 24 (Gen 3) supports 10-point capacitive touch which can greatly improve creation efficiency.

Slide the switch to the left/right to turn off/on the multi-touch.

* Note:

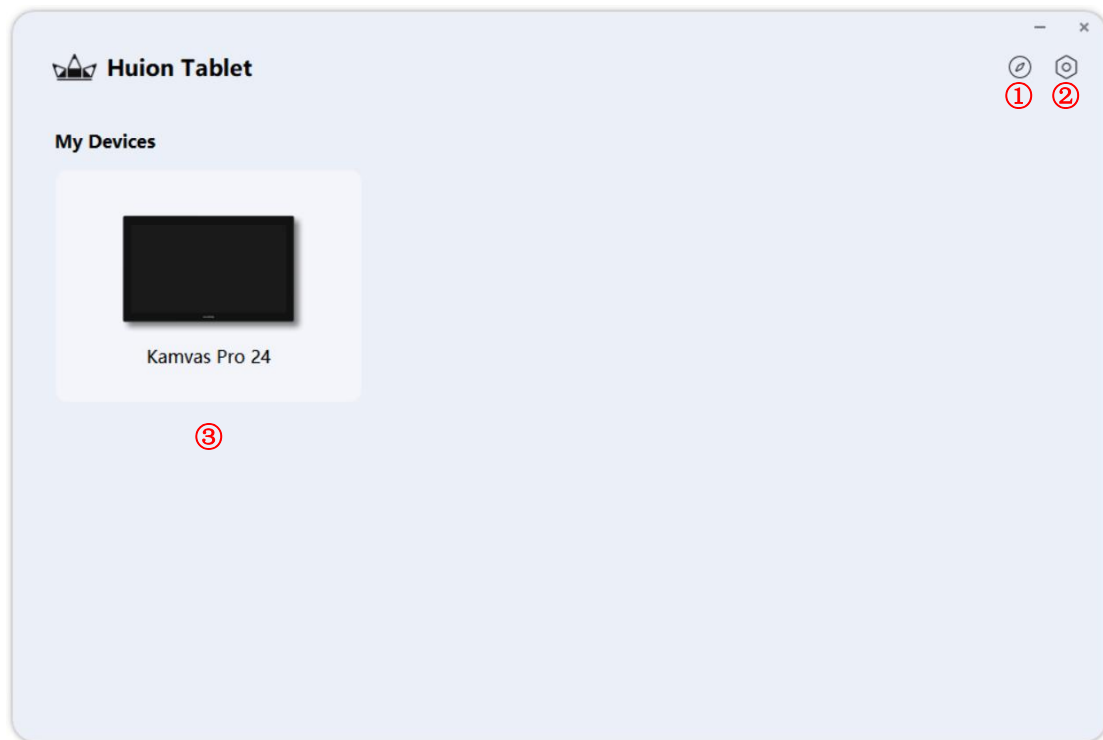
1.The capacitive touch feature is only supported on Windows OS temporarily. In addition to Windows touch gestures, other functions may be supported depending on the specific program.

2.The capacitive touch feature is enabled by default when the pen display is first turned on.

General Functions		
Finger	Gestures	Action
One-finger	Tap	Select
	Double tap	Open the file
	Press and hold	Show more commands (like right-clicking)
	Press and drag	Move the file
Two-finger	Slide horizontally or vertically	Scroll
	Pinch in or stretch out	Zoom out or zoom in
Three-finger	Swipe up	Show all open windows
	Swipe down	Show the desktop
	Swipe left or right	Switch between open apps or windows
Four-finger	Swipe up	Show all open windows
	Swipe down	Show the desktop
	Swipe left or right	Switch desktops

6. Huion Tablet Driver

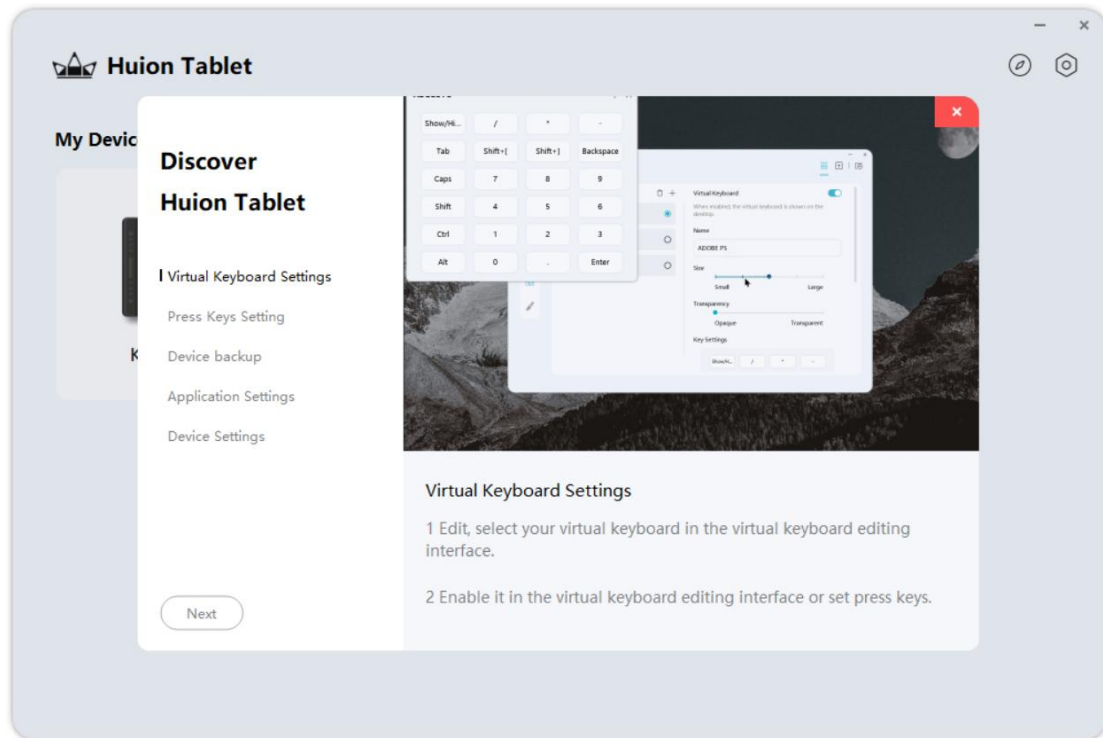
6.1. Driver Homepage



6.1.1. New Features Guide

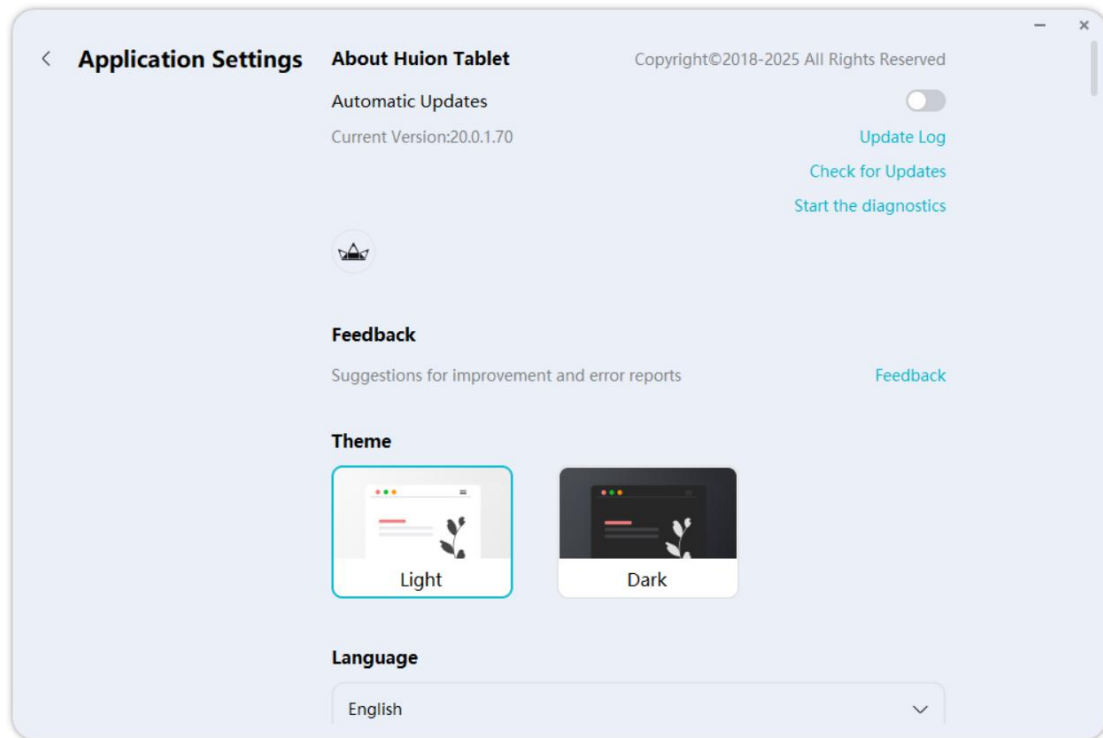
Users can view the New Features Guide here, and quickly master basic driver functions and settings.

You can close the page by clicking on the Close box in the upper right-hand corner or completing the guide.



6.1.2. Application Settings

Users can adjust global settings for the driver here, including driver version and update, problem feedback, theme, language, software hotkey, privacy agreement, etc.



Feature Overview:

Automatic Updates	When it is enabled, updates will be checked and installed automatically.
Update Log	Click on it to access the official update log.
Check for Updates	Click on it to verify whether the driver version is the latest, and then follow the prompts to update if needed.
Start the Diagnostics	If you encounter issues such as being unable to click, draw lines, or lack of pressure sensitivity in an application, you can click on "Start the Diagnostics" to find out the cause.
Official Website	Click on the brand icon to visit Huion's official website.
Feedback	When you click on "Feedback", the mailbox application on your computer will launch automatically, and the device information will be pre-filled and a standard question format will be provided.
Theme	Change the theme color and restart the software to make the settings take effect.
Language	Click on the drop-down button to select your preferred language and

	restart the software to make the settings take effect.
Hotkeys	<p>Open the driver interface: Use the default shortcuts to quickly bring up the driver interface. Or you can set your own shortcuts according to your habits.</p> <p>Switch mapping screen: Use the default shortcuts to switch screens mapped to the pen tablet/pen display. Or you can set your own shortcuts according to your preferences. The screen switching hotkey works only for the current selected device in the Huion Tablet driver.</p> <p>When you want to restore the shortcuts for opening the driver interface by default, click "Reset Defaults" .</p>
Other Permissions	<p>Share diagnostics and usage information: Send diagnostic and usage data automatically to help improve our products and services.</p> <p>Start automatically at boot: The driver will automatically start after the computer is turned on.</p> <p>Administrator privileges: This item is only available for Windows OS. The driver will identify whether or not the current driver page is opened with administrator privilege. This item will only appear if the current driver page is not opened with administrator privilege.</p>

6.1.3. Device

Click on the device image to enter the device page where users can customize the settings for the selected device.

6.2. Device Page

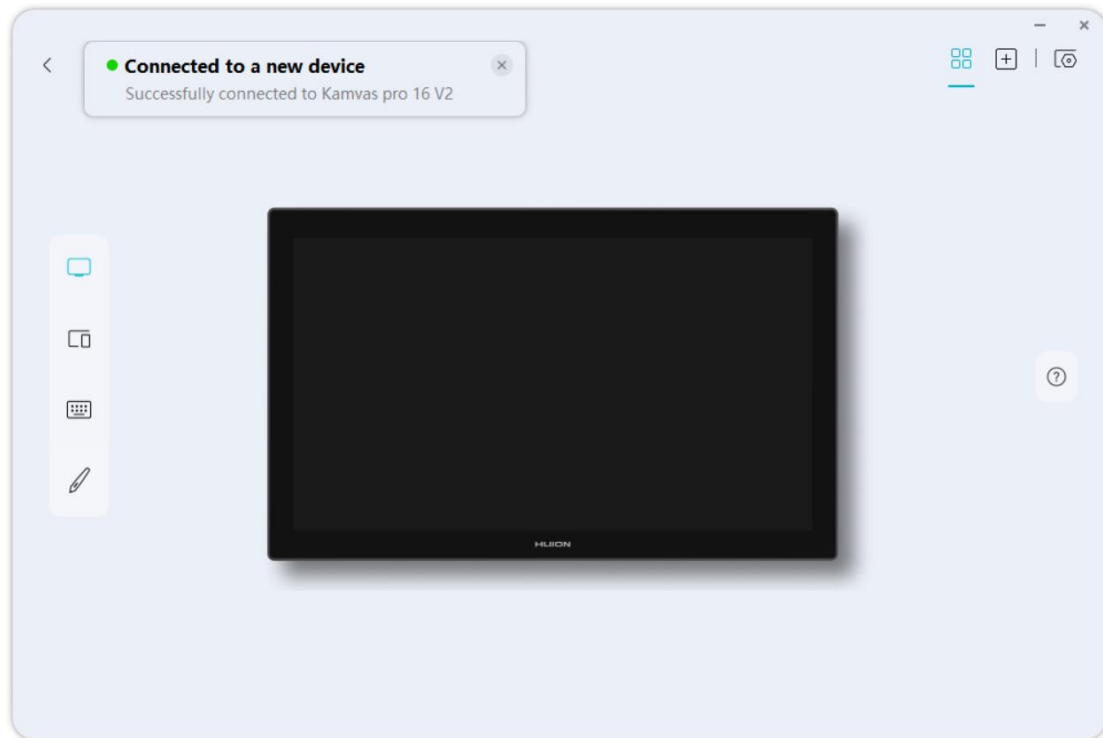


6.2.1. Device Name

Name of the selected device appears in the upper left corner of the page. Click the drop-down box to switch between devices.



A reminder pops up when a new device is successfully connected.

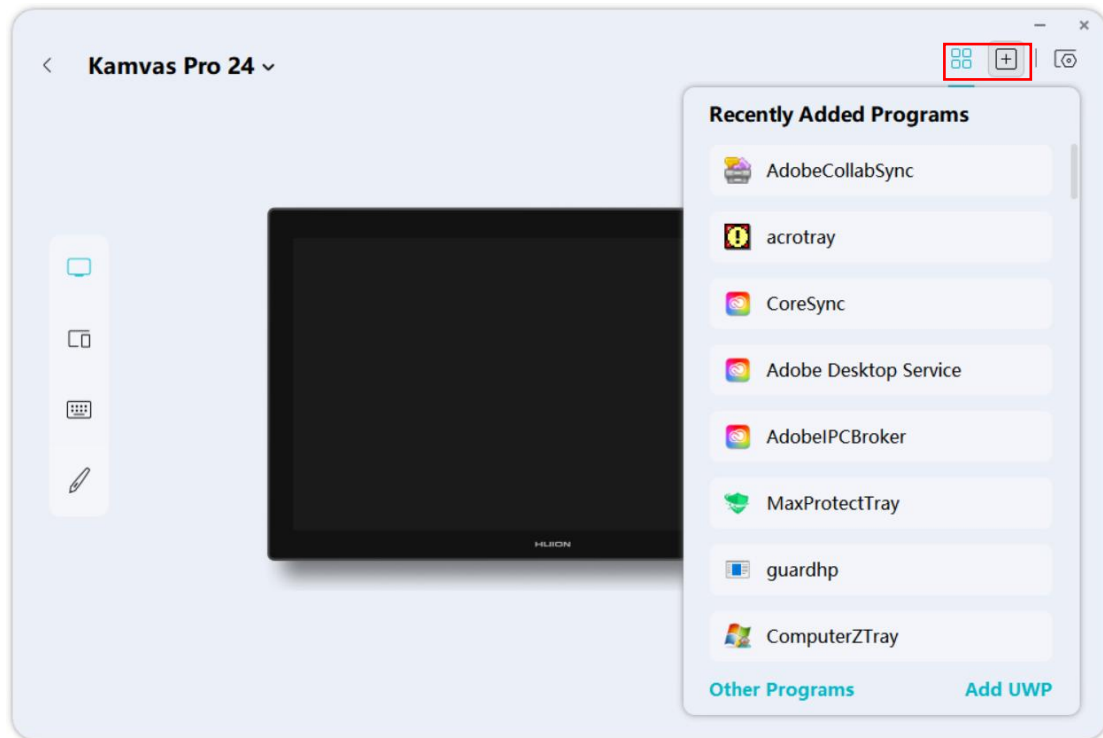


6.2.2. Add New Software

A set of function combinations can be configured individually for the selected software. After clicking the plus button in the upper right-hand corner, the recently opened software on the device will appear. Select the software that needs to be set and add it as a preset software. Or you can click the delete button to delete it when you hover the cursor over the software icon.

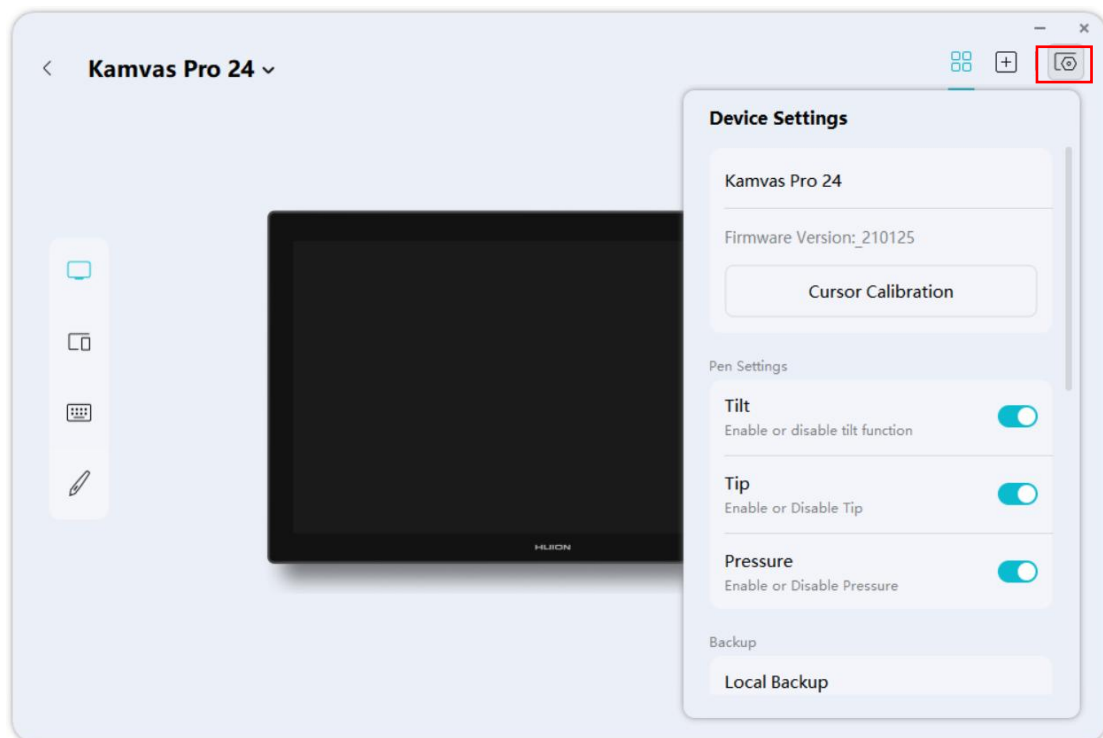
When switching to the preset software, setting options automatically switches to those of this software.

If you can't find the software you need, click "Other Programs" to add a new one from the computer.



6.2.3. Device Settings

You can check the firmware version or configure cursor calibration, pen settings, and backup settings in the Device Settings window.



Device Setting Options:

Device Information	Device model and firmware version are included.
Cursor Calibration	Click “Cursor Calibration” to enter the calibration page and follow the instructions to start the calibration. If you accidentally click wrong and the cursor calibration is inaccurate, click “Factory Reset” to recalibrate.
Tilt	Simulate the tilt of a real pen. Click the toggle switch on the right side to enable or disable tilt function.
Tip	The pen tip functions include pressure sensitivity, clicking, etc. Click the toggle switch on the right side to enable or disable tip.
Import Backup	After opening the file manager, select and open your configuration file to import the backup.
Export Backup	Export the current settings to a local file and name the file.
Default Setting	Reset all settings on the current device to default.

6.2.4. Functional Navigation Bar

You can customize the press keys, the working area, the virtual keyboard, and the digital pen according to your personal preferences. Click each icon in the navigation bar to jump to the corresponding settings page.

6.2.5. Battery & Common Problems

Battery: Check the remaining battery level of the device.

Common problems: Click the question mark icon and jump to <https://www.huion.com/support.html> to get a user manual or feed back the problems to us.

6.3. Pen Display Setting

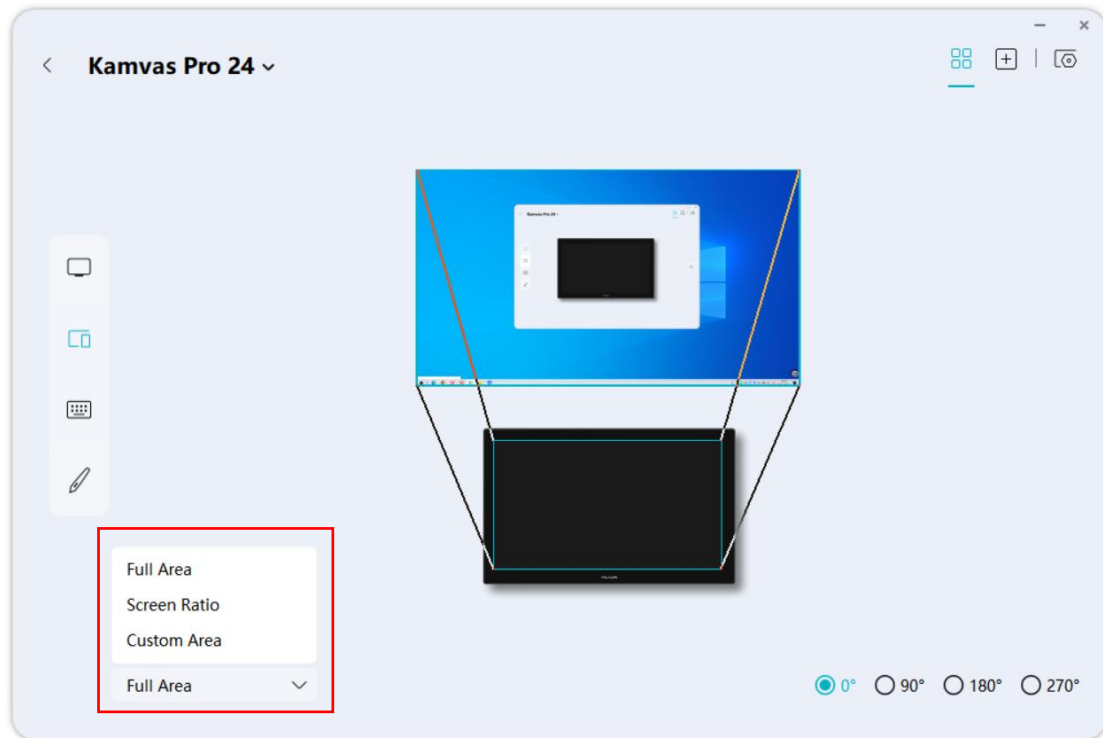
Select the Working Area tab to adjust the ratio of the distance of pen movement on the pen display to that of the corresponding cursor movement on the monitor. By default, the entire active area of the pen display maps to the whole monitor.

If more than one monitor is in use and they are in extended mode, users need to choose one that will be mapped to on the driver interface and the other one as the external display.

In mirror mode (All monitors display the same content), the pen display maps to the entire screen on each monitor and cursors displayed on them move simultaneously.

6.3.1. Working Area Setting

Define the pen display area that will be mapped to the monitor. Three modes on the driver can be chosen:



[1] Full Area:

The entire active area of the pen display will be mapped to the monitor. It is the default setting.

[2] Screen Ratio:

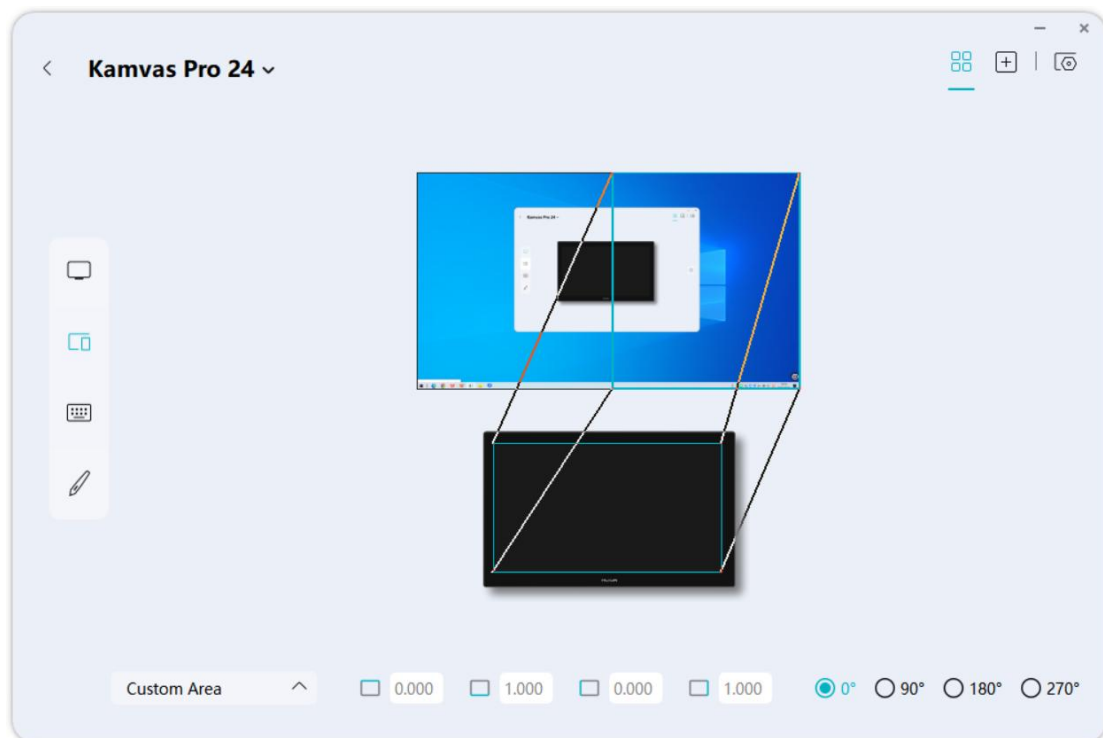
The ratio of the active pen display area is the same as that of the monitor connected to the pen display. For example, if you choose “Screen Ratio” and draw a circle on the pen display, a circle will maintain the original shape on the monitor as it is on the pen display.

Please note that some parts of the pen display may not work in the Screen Ratio mode.

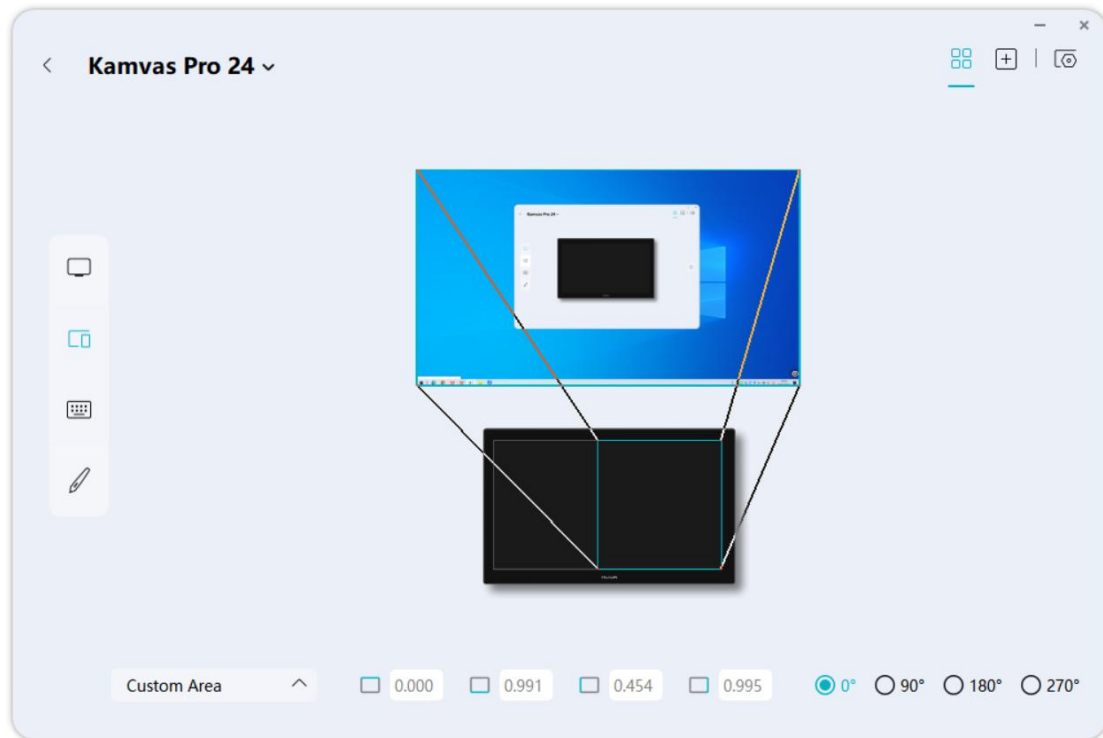
But if “**Screen Ratio**” is not selected, the drawn graphics may become distorted. For example, if you draw a circle, the circle may change into an oval on the monitor. To ensure optimal display and use of the working area, it is recommended to choose “**Screen Ratio**” when drawing or performing precise operations.

[3] Custom Area:

- ① Enter coordinate values.
- ② Users can adjust the working area of the pen display by changing the outlines of the smaller rectangle. Users can also drag the two blue rectangles to select the active areas of the digital pen on the screen and the pen display. (see picture 1 and 2).



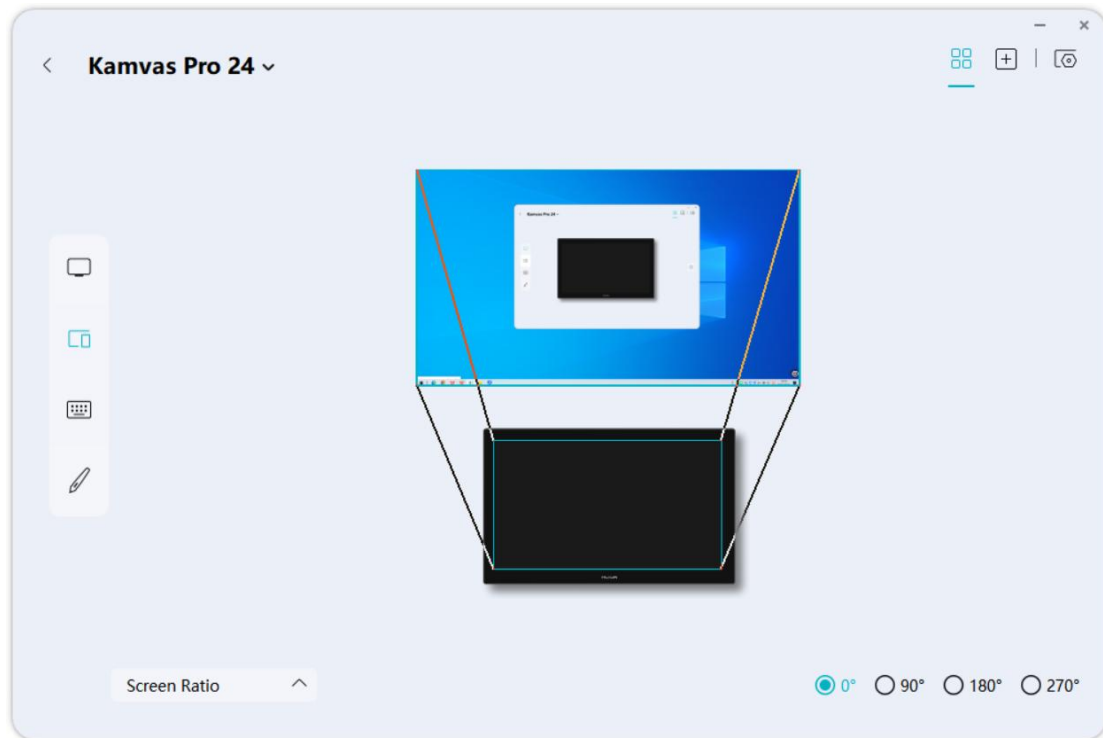
Picture 1



Picture 2

6.3.2. Rotate Working Area

Change the direction of the pen display to adapt to the left- and right-handed operation. You can rotate the pen display by 0°, 90°, 180° or 270°.



Picture 1

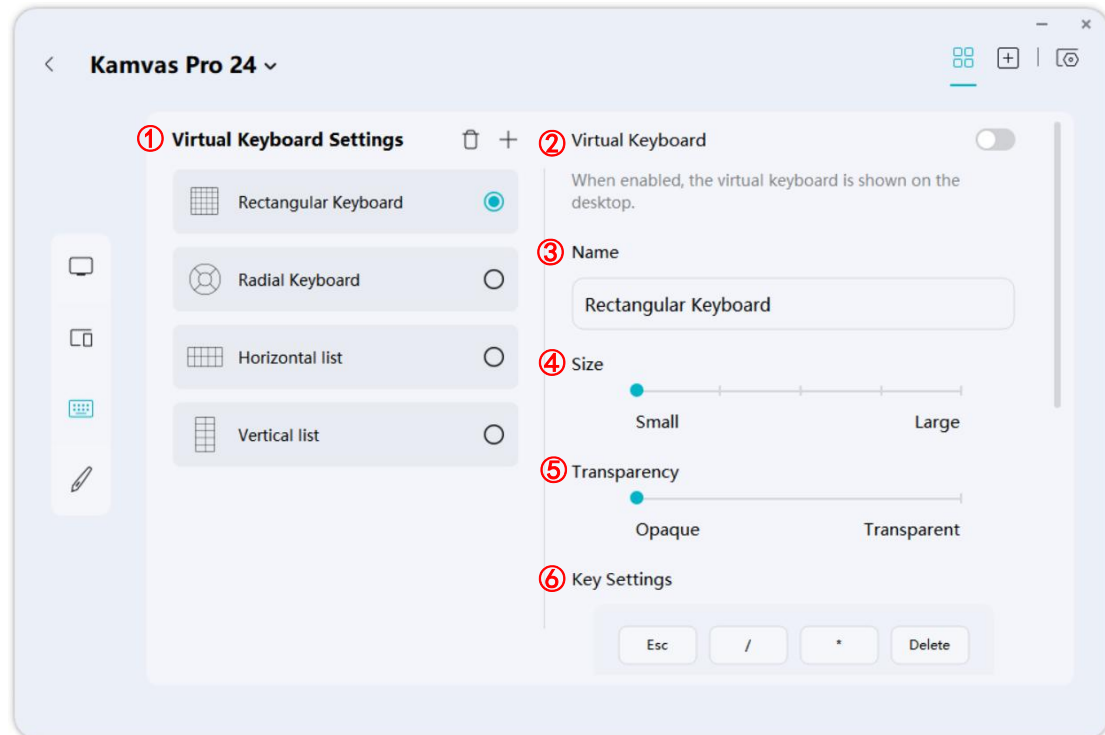


Picture 2

6.4. Virtual Keyboard

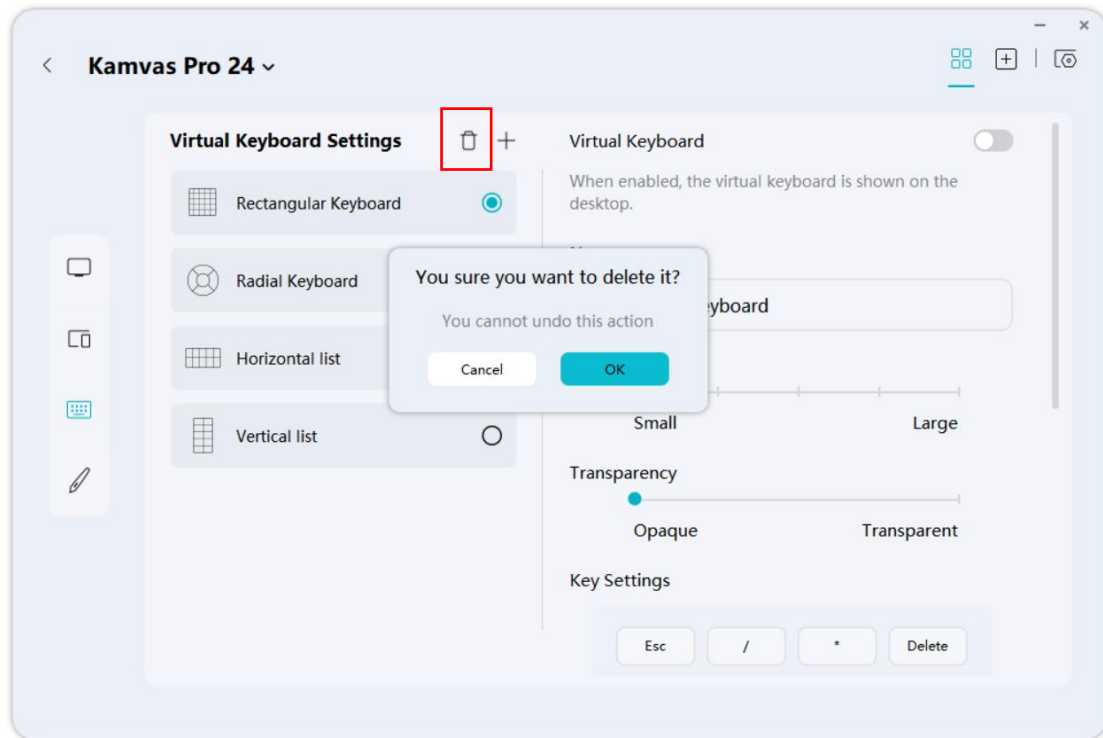
Virtual keyboard is a highly customizable interactive tool on the screen that supports

text input and command execution via a mouse or a digital pen. You can create and save 20 keyboard layouts, with each one supporting custom adjustments for name, size, transparency, and key functions to suit your needs.



6.4.1. Create/Delete Virtual Keyboard

- ① Click “+” to create a virtual keyboard.
- ② Select the desired keyboard type from the provided options, including radial keyboard, rectangular keyboard, horizontal list keyboard, and vertical list keyboard.
- ③ Turn on the toggle switch of “**Virtual Keyboard**” to enable the virtual keyboard on your desktop and use it.
- ④ Select the keyboard you want to delete.
- ⑤ Click the delete icon.



⑥ A pop-up prompt will appear. Click “OK” to delete the selected keyboard.

6.4.2. Enable Virtual Keyboard

After turning it on, the virtual keyboard is displayed on the desktop and it's set to disappear after one use. You can click the pin button in the upper right corner to keep the keyboard always on. Long press on any area of the virtual keyboard except for the buttons to drag the keyboard.

6.4.3. Name

You can modify the name of the virtual keyboard in the name input box. The default name is the type of the keyboard and the name cannot be empty.

6.4.4. Size

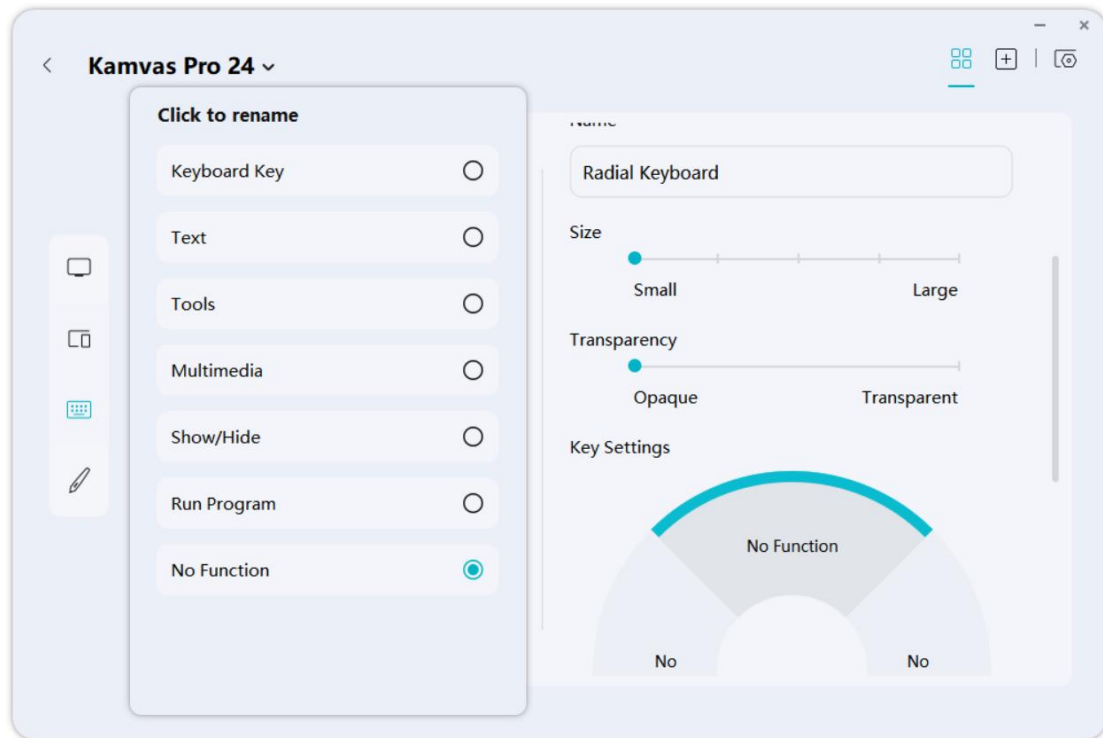
You can drag the slider or click on the slider bar to adjust the size of the virtual keyboard according to your needs. When you' re setting the size of a virtual keyboard that' s not enabled, the corresponding keyboard will automatically open and adjust its size. And it will automatically close 3 seconds after the adjustment is complete.

6.4.5. Transparency

To avoid the virtual keyboard obstructing your view, you can adjust the transparency of the virtual keyboard according to your needs by dragging the slider or clicking on the slider bar. When you' re setting the transparency of a virtual keyboard that' s not enabled, the corresponding keyboard will automatically open and adjust its transparency. And it will automatically close 3 seconds after the adjustment is complete.

6.4.6. Key Settings

Click the virtual keyboard key to set the corresponding key value.



The functions of the virtual keyboard keys can be set as:

Click to Rename	Click to enter a name for a press key. The newly edited name will be displayed together with the key value.
Keyboard Key	Click on the input box and enter a valid key combination to create a shortcut.
Text	Output the predefined text up to 500 words.
Tools	Select Switch Screen or Switch Brush.
Multimedia	You can apply these functions to press keys: Previous Song, Next Song, Play/Pause, Volume up, Volume down, and Muted.
Show/Hide	Show/hide driver settings and key values of press keys.
Run Program	Enter the URL address of an application, a file, or a website, or click the "Browse" button to select a file, and then click "OK". Once the setup is complete, press the key to open the corresponding file.
No Function	When None is selected, the key will not perform any function when pressed.

Note: The performance of functions in the table below is up to the device that you have connected. And this table is subject to change without notice.

6.5. Digital Pen

Users can configure pen functions on this interface, including press key function assignment, pressure sensitivity adjustment, and pressure test.

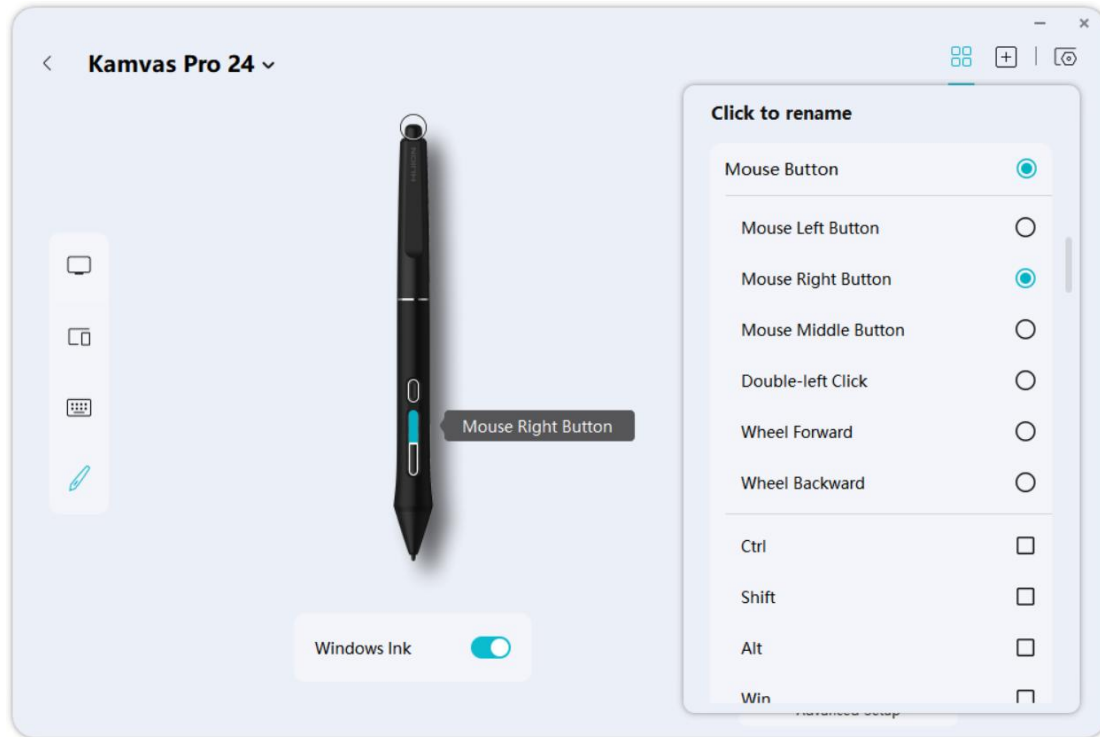


6.5.1. Switch Digital Pen

The digital pen models you have paired are displayed in the navigation bar, allowing you to configure them separately. The system automatically recognizes the connected digital pen and applies its corresponding settings. When you switch between different digital pens, the system will automatically switch to the settings interface for the corresponding digital pen. When the cursor hovers over the digital pen icon, the name of the digital pen will be displayed. Clicking the "x" in the upper left corner of the digital pen icon will delete the corresponding digital pen settings.

6.5.2. Press Key

You can use this digital pen to interact with your device, including drawing, writing, moving files, or activating the functions of pen press keys.



The functions of the press keys can be set as:

Click to Rename	Click to enter a name for a press key. The newly edited name will be displayed together with the key value.
Keyboard Key	Click on the input box and enter a valid key combination to create a shortcut.
Text	Output the predefined text up to 500 words.
Tools	Select Switch Screen or Switch Brush.
Multimedia	You can apply these functions to press keys: Previous Song, Next Song, Play/Pause, Volume up, Volume down, and Muted.
Show/Hide	Show/hide driver settings and key values of press keys.
Run Program	Enter the URL address of an application, a file, or a website, or click the "Browse" button to select a file, and then click "OK". Once the setup is

	complete, press the key to open the corresponding file.
Precision Mode	Move the slider to set the precision you want to toggle into. Higher precision results in a smaller precision mode window. After pressing this shortcut key, the precision mode window will appear at the cursor location, and the working area of the pen tablet or pen display will be mapped to this window. Press the shortcut key again to exit precision mode.
Pan/Scroll	This function allows you to pan and scroll in a document or item by moving the pen tip up and down or right and left. When you select Pan/Scroll, the Scroll Speed window appears. Move the slider to your preferred scrolling speed.
Virtual Keyboard	Select it to assign a shortcut key for bringing up the corresponding virtual keyboard function. Click here to learn more about Virtual Keyboard.
Run Program	Enter the URL address of an application, a file, or a website, or click the “Browse” button to select a file, and then click “OK”. Once the setup is complete, press the key to open the corresponding file.
None	When None is selected, the key will not perform any function when pressed.

Note: The performance of functions in the table below is up to the device that you have connected. And this table is subject to change without notice.

6.5.3. Enable Windows Ink

Microsoft Windows provides extensive support for pen input. When the “Enable Windows Ink” option is ticked, pen features are supported in software such as Microsoft Office, Windows Whiteboard, Adobe Photoshop CC, SketchBook 6, etc.

Note: macOS and Linux OS do not support this feature.

6.5.4. Pressure Sensitivity Adjustment

Users can adjust the pressure sensitivity level by dragging the slider in the Pressure Sensitivity Adjustment box according to your usage habits. Users can also check the five options from soft to hard on the right of the box to find the proper pressure

sensitivity for themselves. Click the redo button at the top right to revert to the default pressure.

①To decide the force required for a pen to produce a click or a pressure sensation.

②③You can change the slope of the pressure response curve.

- Draw lines in the Pressure Test box with the pen, and the bar on the right will simultaneously show the pressure changes on the pen nib. Click the “Delete” button above to remove the lines, reset the pressure sensitivity level and test it until you find the appropriate pressure sensitivity level.
- A steep curve means a more sensitive response.



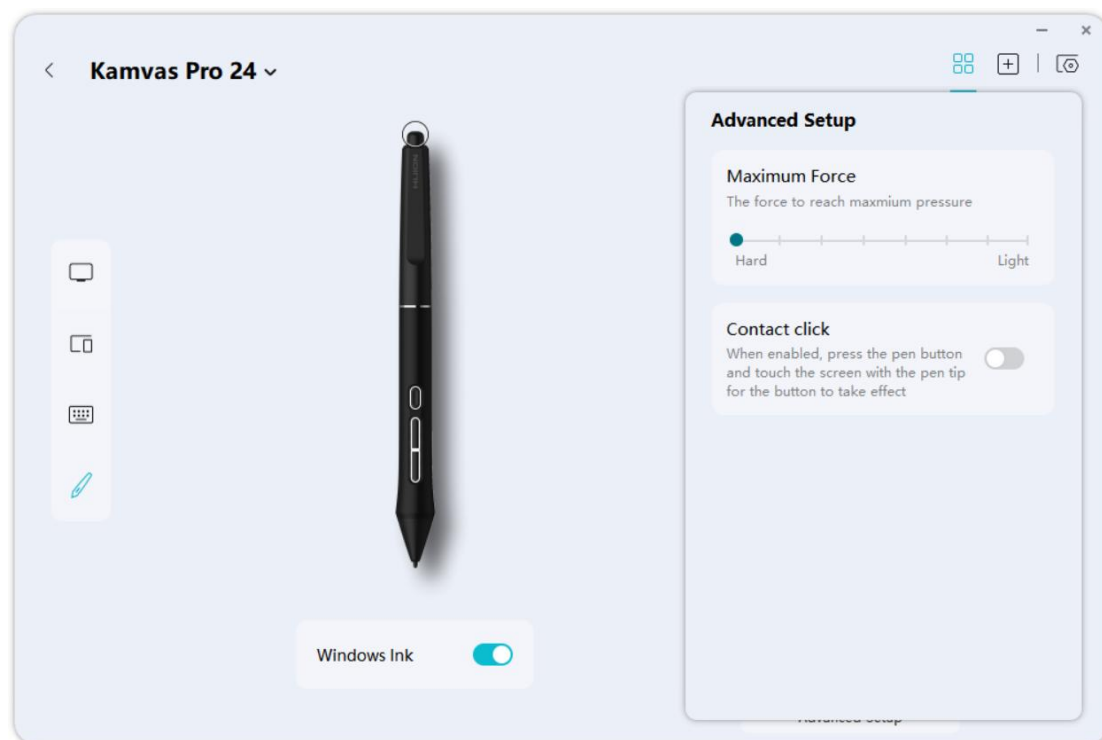
6.5.5. Pressure Test

After modifying the pressure curve or adjusting the maximum force, you can observe the relationship between the pressure applied and the resulting effect in real-time by

pressing the pen tip in the pressure test area. The bar graph on the right will display the changes in pressure in real-time. By clicking on the “Clear” button located at the top of the pressure test area, you clear the drawn strokes and initiate a retest. This feature enables you to intuitively adjust and test the pressure sensitivity settings of the digital pen, ensuring that the settings meet your usage preferences.

6.5.6. Advanced Setup

You can adjust the maximum force in the Advanced Setup. The lighter the maximum force, the less force is required to reach the maximum pressure, with the default setting being the hardest.



7. Pen-enabled OSD Menu

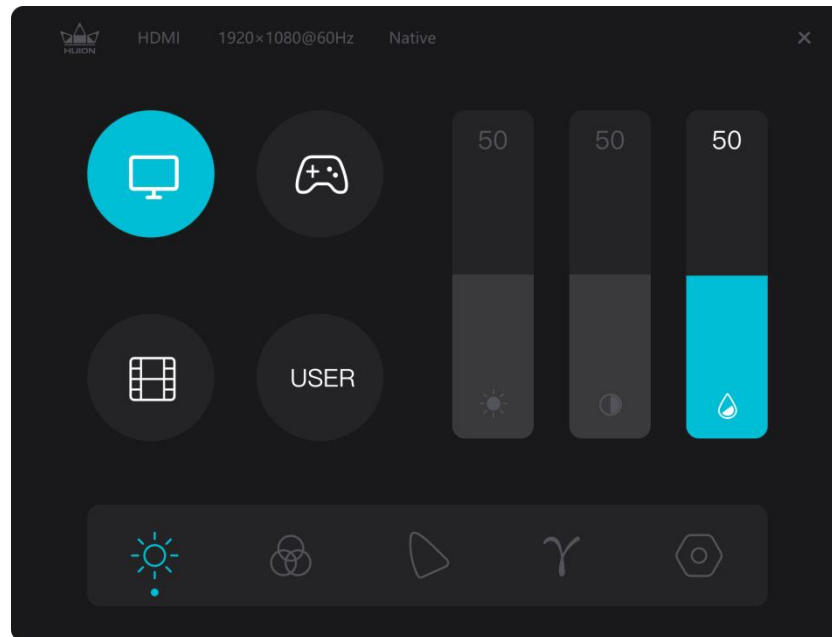
Long press the power button for 3s to bring up the OSD menu, and then use the digital pen to adjust the settings on the screen.



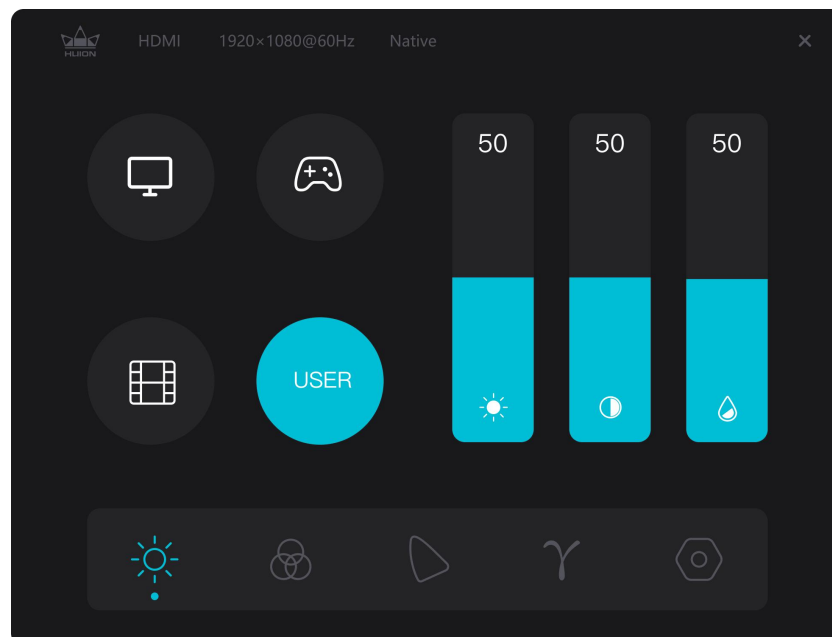
7.1. Scene Mode

Click the sun icon to adjust the brightness. On the upper left of the interface, there are four modes to be chosen: "Standard Mode", "Game Mode", "Movie Mode" and "USER" mode. On the upper right are "Brightness", "Contrast", and "Saturation".

When "Standard Mode", "Game Mode", or "Movie Mode" is chosen, only the third bar will be blue and users can drag it to adjust the saturation.



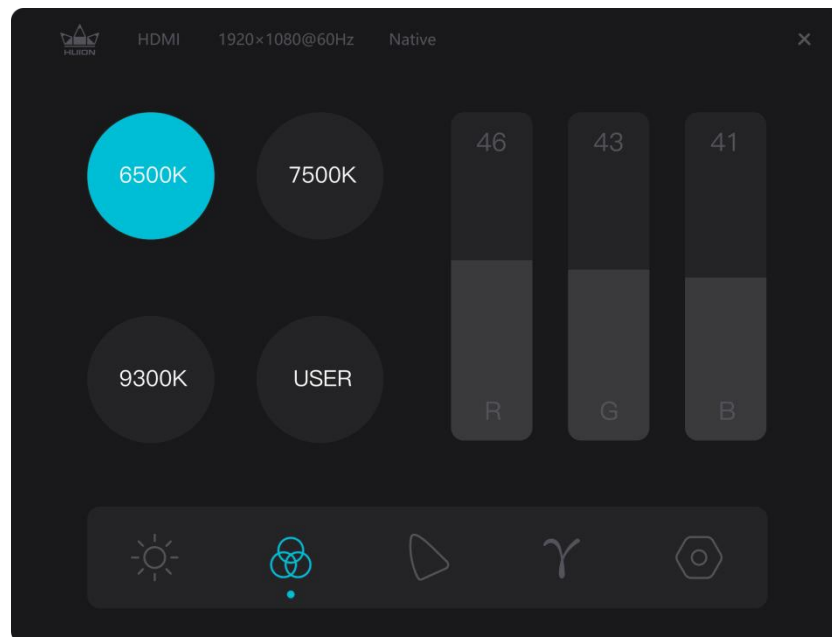
When "USER" mode is chosen, all three bars will be blue and users can adjust the brightness, contrast, and saturation by dragging them.



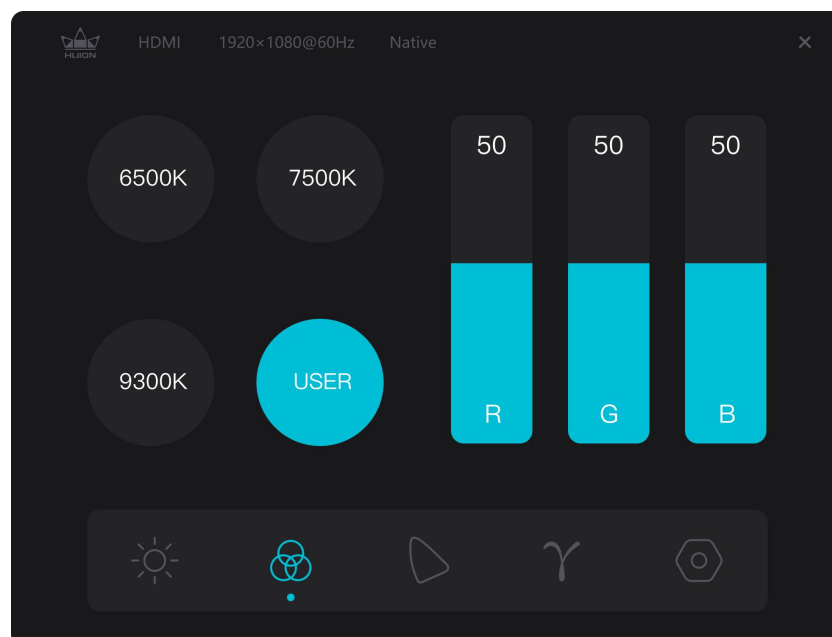
7.2. Color Temperature Settings

On the upper left are three standard color temperatures ("6500K", "7500K", and "9300K") and a customizable one "USER" mode. On the upper right are the RGB color values: "R(Red)", "G(Green)", and "B(Blue)".

If "6500K", "7500K", or "9300K" is chosen, all three bars will be dark and users can not adjust "R(Red)", "G(Green)", or "B(Blue)".

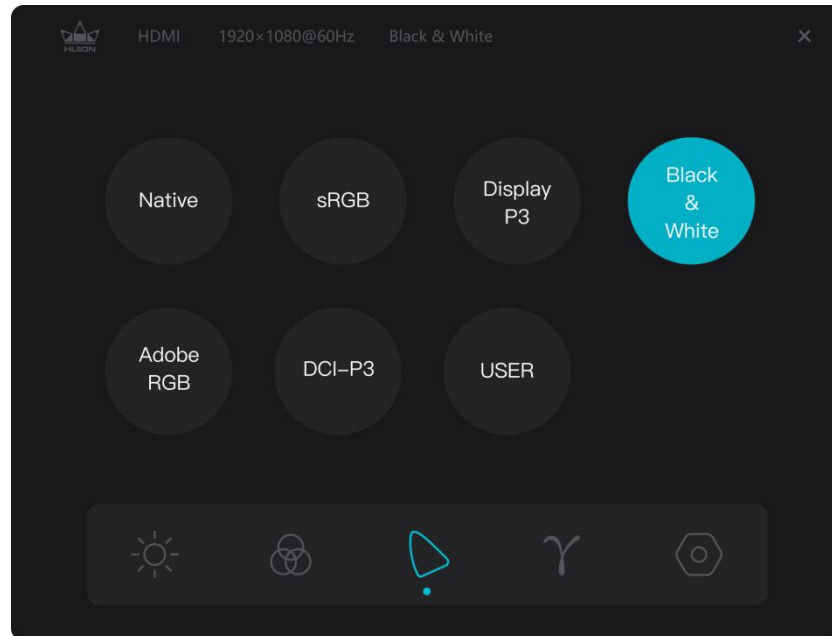


When "USER" mode is chosen, all three bars will be blue and users can adjust "R(Red)", "G(Green)", and "B(Blue)" by dragging them respectively.



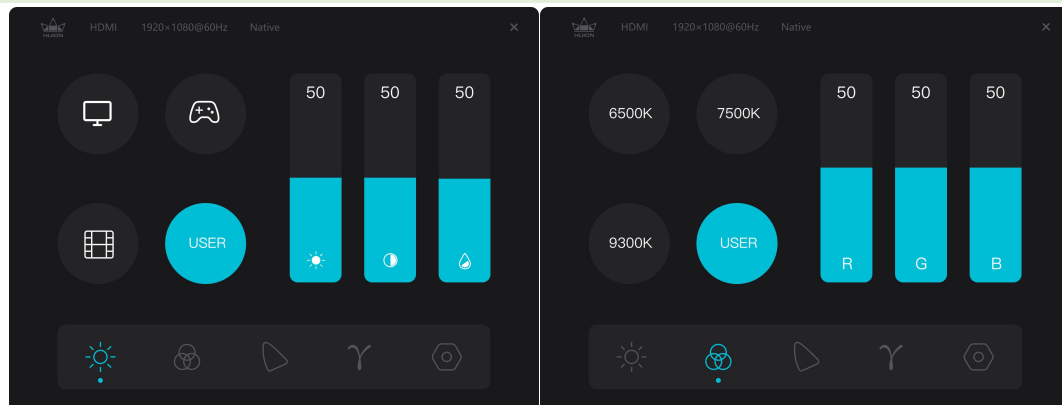
7.3. Color Gamut Settings

The interface displays the following color space options: “Native” , “sRGB” , “Display P3” , “Black & White” , “Adobe RGB” , “DCI-P3” , and “USER” .

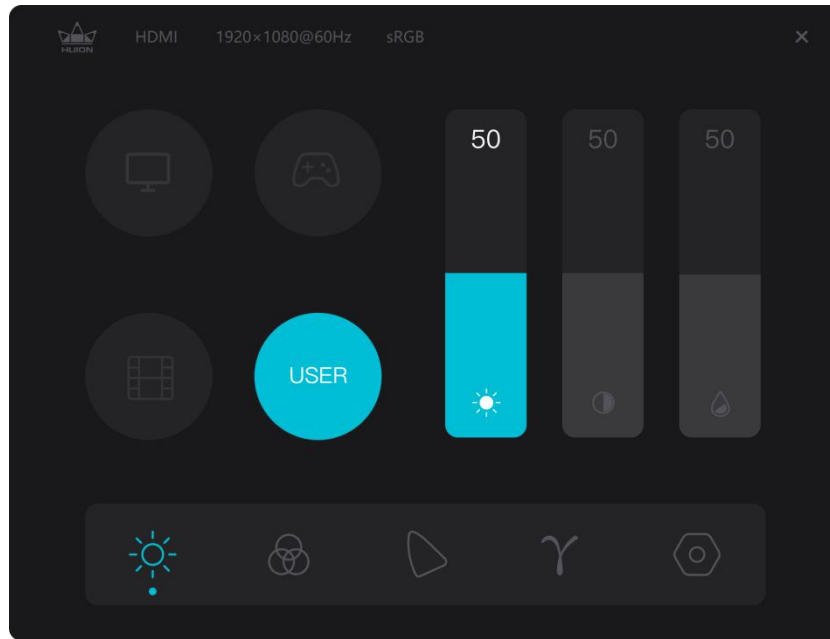


Note:

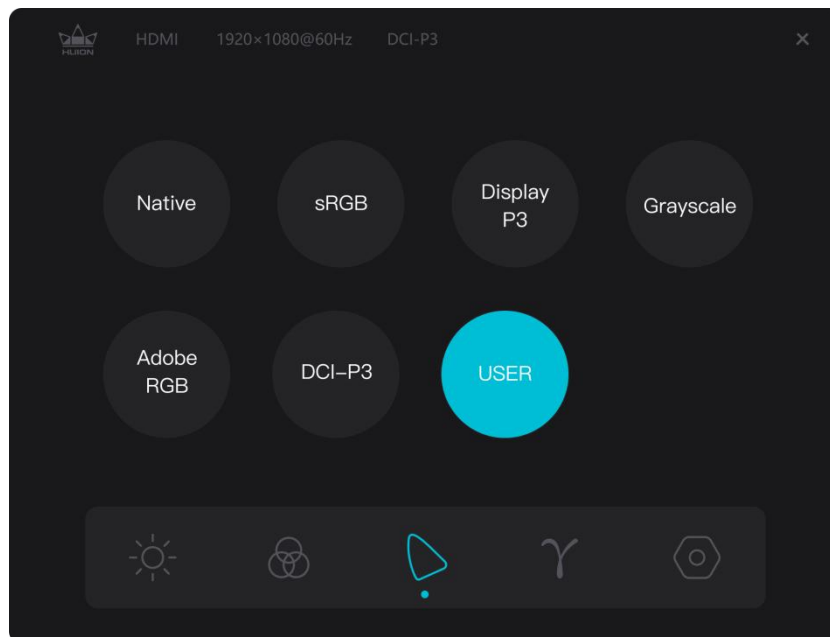
In Native color space, values on the “Scene Mode” adjustment interface and “Color Temperature” adjustment interface can be freely adjusted or selected.



To maintain color gamut compliance, brightness adjustment is limited to the “USER” mode when you are using sRGB, Display P3, Black & White, Adobe RGB, or DCI-P3 color space.

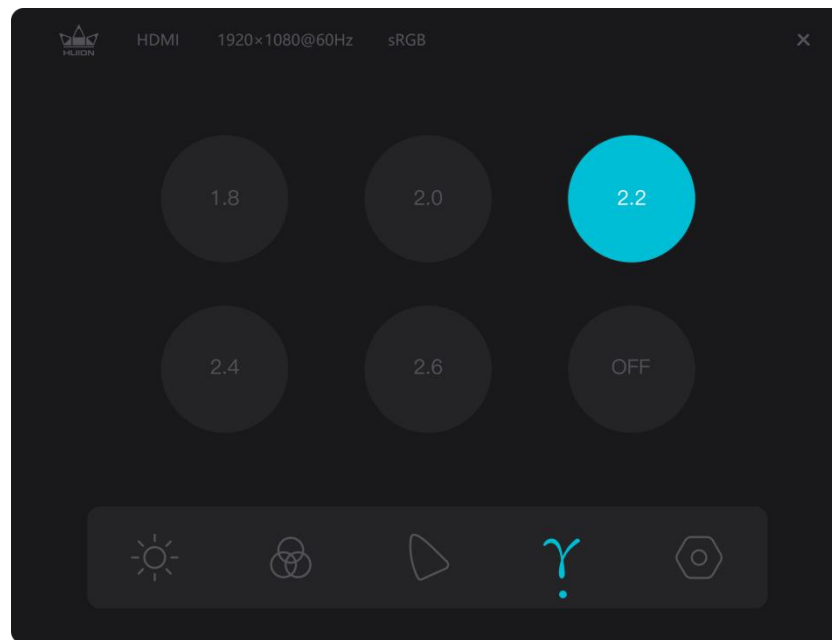


USER Color Space: Create and save your custom color profile effortlessly using the G1 GTCOLOR calibrator in conjunction with GTCOLOR calibration software.



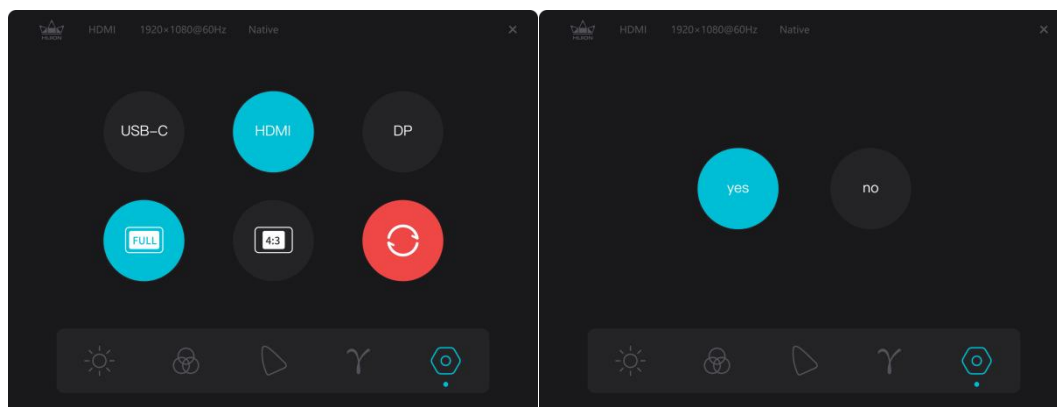
7.4. Gamma Correction

The gamma value is fixed within specific color spaces (e.g., 2.2 for sRGB/Adobe RGB/Display P3, 2.6 for DCI-P3). Custom gamma adjustment is available in Native and Black & White modes for scenario-based optimization.



7.5. General Settings

- ①USB-C/HDMI/DP: connect via aUSB-C/HDMI/DP cable.
- ②FULL: change the viewable area to full screen.
- ③4:3: change the aspect ratio of viewable area to 4:3.
- ④Reset: All the settings of the OSD menu will be reset to default ones.



8. Troubleshooting

Problems	Solutions
The pen tablet cannot sense the pen pressure while the cursor can move.	You may have installed other drivers or run the drawing software when installing the driver. Please uninstall all the drivers, close the drawing software, and then reinstall the Huion driver. It is suggested to restart your computer after finishing the installation. In addition, if the application is not compatible with the driver or does not support pressure sensitivity, there will also be no pressure sensitivity in this application.
The digital pen does not work.	1. Make sure you are using the pen that originally came with your tablet. 2. Make sure you installed the driver correctly.
The press key does not work.	1. Make sure you are using the pen that originally came with your tablet. 2. Make sure you installed the driver correctly.
The computer cannot enter sleeping mode.	Please do not place the digital pen on the working area of the pen display when you are not using it, otherwise, the computer will not be able to enter sleep mode.
The press key of the digital pen does not work.	The press keys of the digital pen will not work when the vertical distance between the pen nib and the tablet is over 10mm. If the vertical distance is within 10mm and the pen press key does not work, please check whether the driver works well and whether you have assigned functions to the two keys correctly or not. Then if the keys still do not work, maybe your pen is broken and you can contact our service team as long as the pen is under warranty.
The computer cannot recognize the pen display.	Please check whether the USB port of your computer functions well. If not, please try another USB port.
Failed to connect Inspiroy 2 to other device and "Device Disconnected" appears.	Please restart your computer or driver; make sure the USB port and USB-C cable work well; unplug the USB cable and plug it again; try another USB port; download and reinstall the latest driver; please whitelist the driver on macOS devices.

If your problem is not resolved, please click [FAQs](#) to view more troubleshooting methods or email us(service@huion.com).